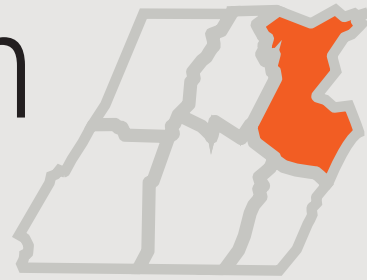


PART 2

Comprehensive Plan for the Southern Alleghenies Region

JUNE 2018

Huntingdon County



ALLEGHENIES
AHEAD



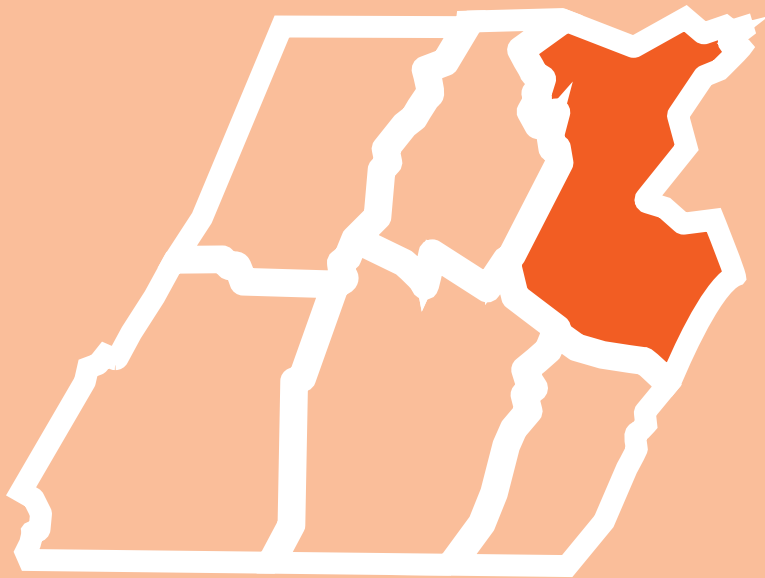


PART 2

Comprehensive Plan for the Southern Alleghenies Region

JUNE 2018

Huntingdon County



1. Land Use and Regulation

2. Population and Demographics

3. Housing

4. Economy

5. Transportation and Mobility

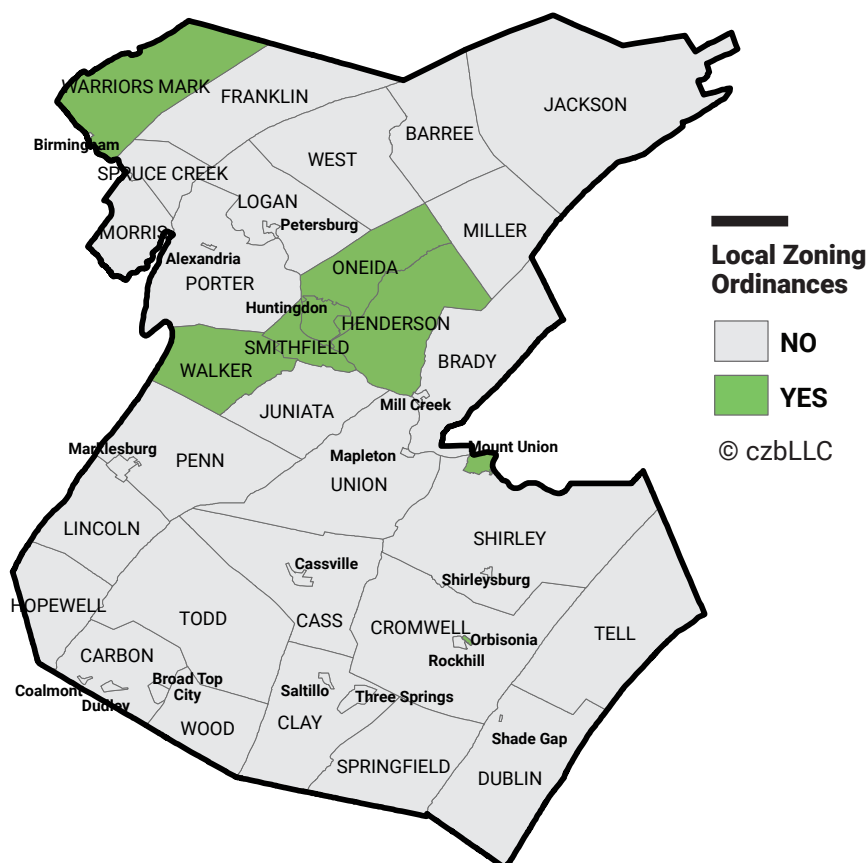
6. Community Facilities and Services

7. Infrastructure and Utilities

8. Environment and Natural Resources

9. Historic and Cultural Resources

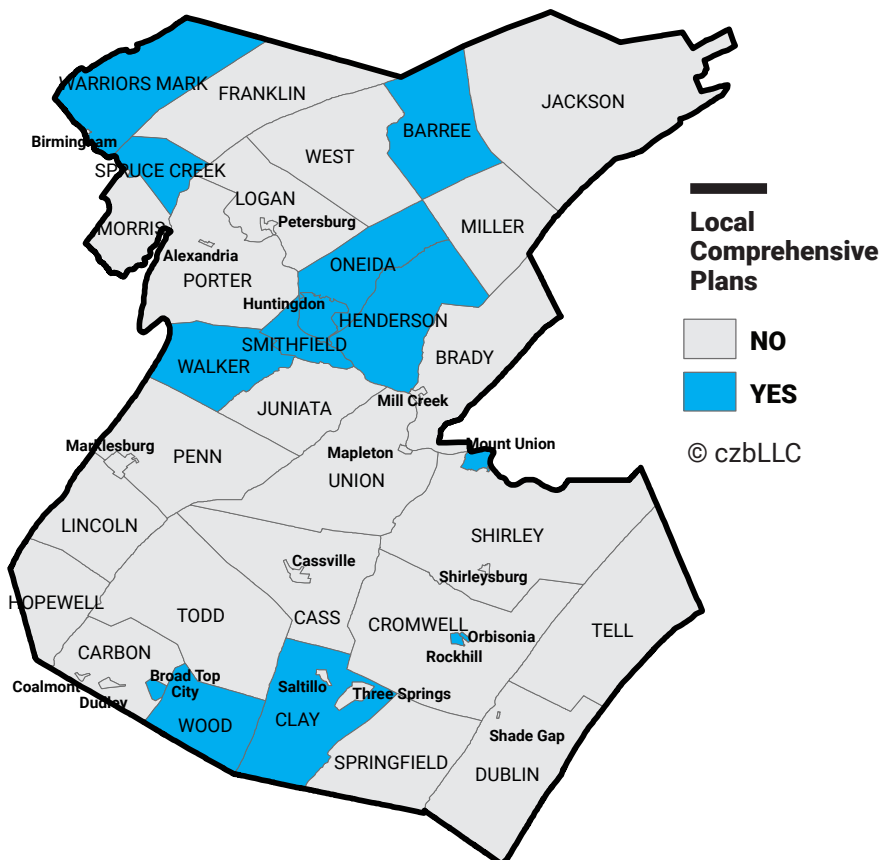
1 Land Use and Regulation



Municipalities in Pennsylvania have the authority to regulate land use and development through the adoption of zoning codes. Seven jurisdictions in the county – including the two largest boroughs – currently have such a code and the county maintains a model zoning ordinance to local adoption efforts.

Local comprehensive plans that provide guidance on land use issues are currently in place in 14 municipalities.

Construction standards in Huntingdon County are set by Pennsylvania's Uniform Construction Code (UCC). Nearly all municipalities in the county have elected to administer and enforce the code locally, while two (Birmingham and Shirleysburg) have relinquished those duties to the Department of Labor & Industry or certified third party agencies.

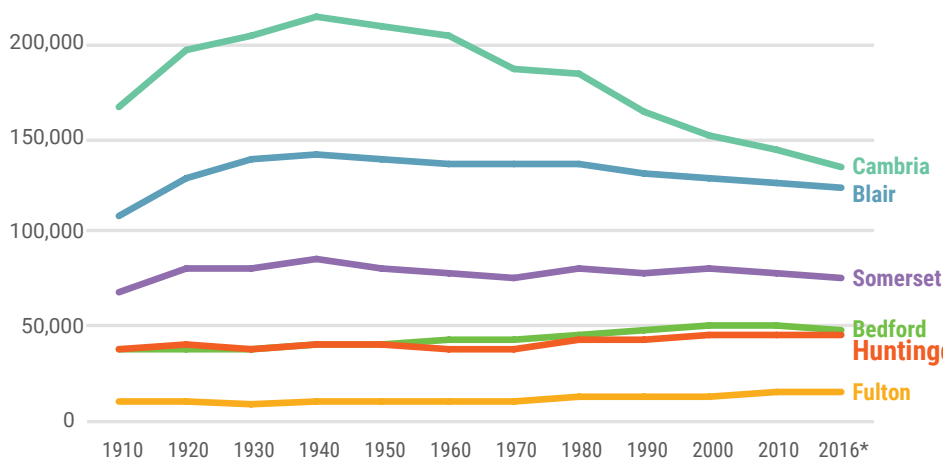


2 Population and Demographics

Huntingdon County's historical population peak occurred with the 2010 Census, which counted just under 46,000 residents. Recent estimates indicate a small decline since then.

Within Huntingdon County, population change since 2000 has been highly variable. Five municipalities have grown by more than 10%, while 15 have declined by more than 10%. Most have experienced only modest change in one direction or the other direction.

Regional Population Trends, 1910-2016

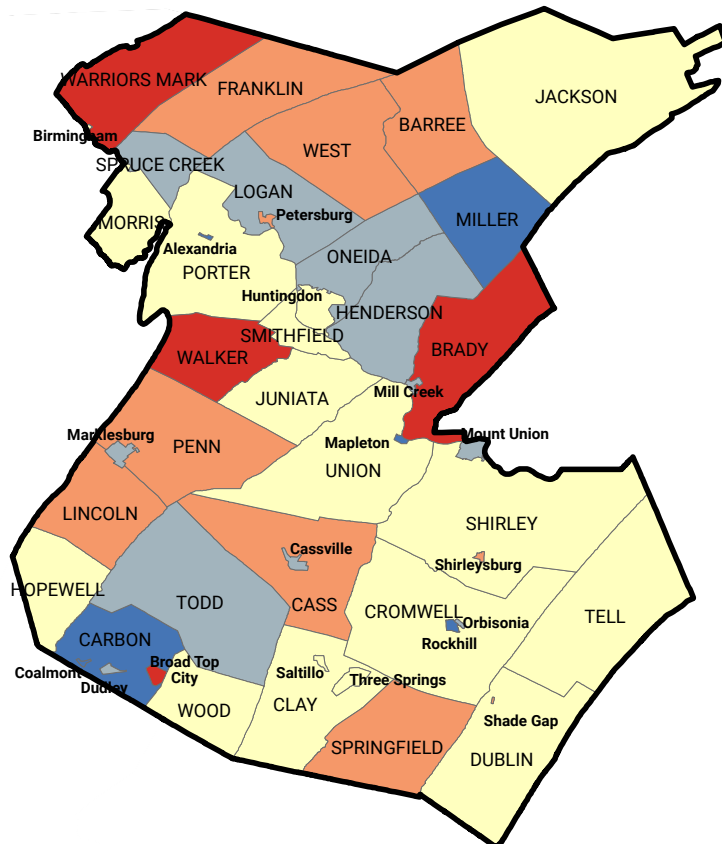


Source: czbLLC analysis of U.S. Census Bureau data.

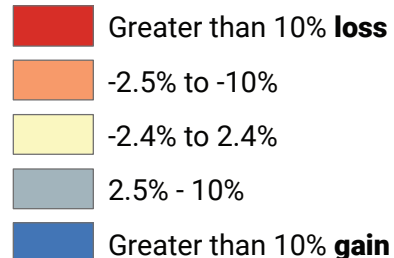
Population Trends, Huntingdon County, 1910-2016

1910	38,304
1920	39,848
1930	39,021
1940	41,836
1950	40,872
1960	39,457
1970	39,108
1980	42,253
1990	44,164
2000	45,586
2010	45,913
2016*	45,634

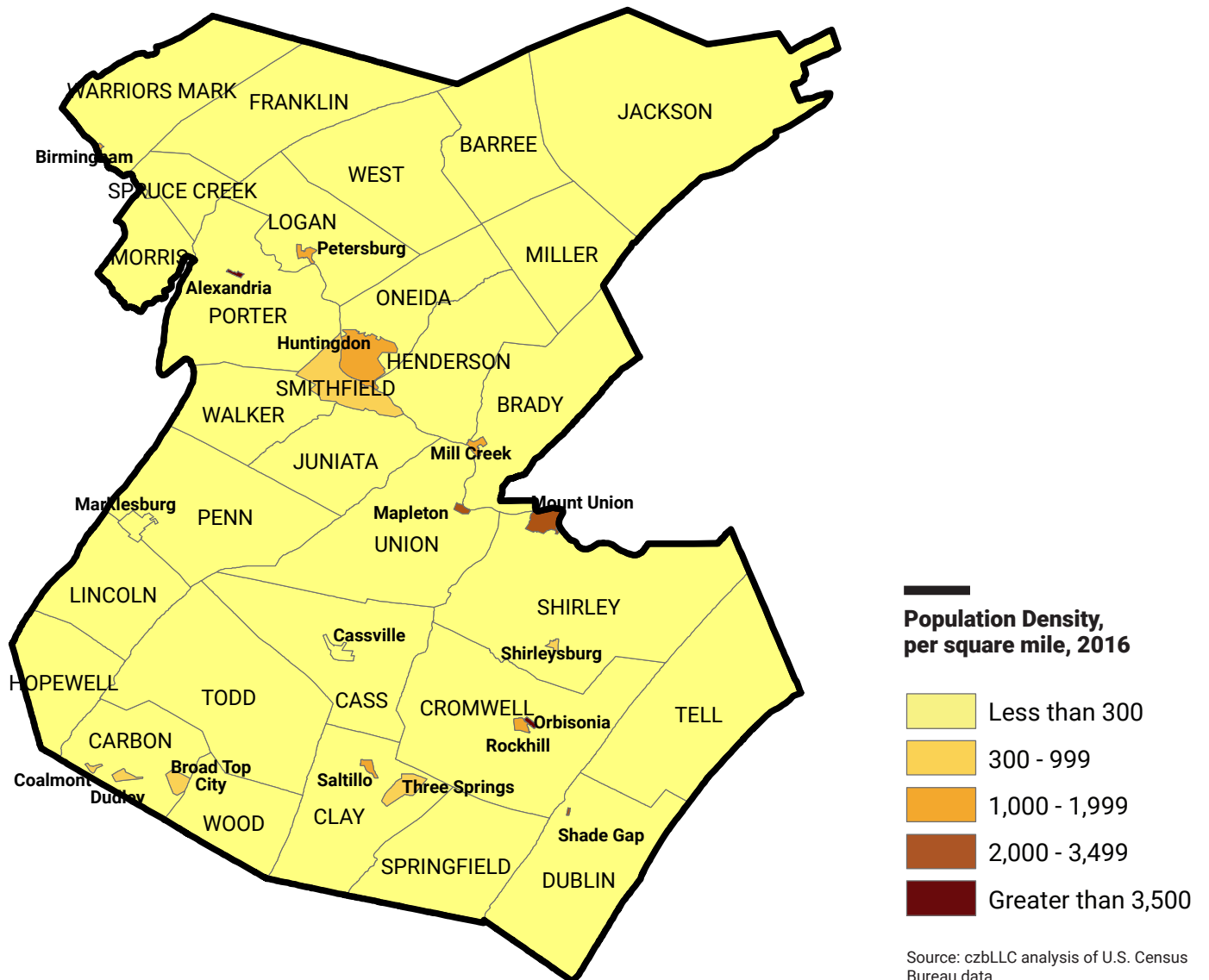
* Estimate



% Population Change, 2000-2016



Source: czbLLC analysis of U.S. Census Bureau data.



**Population Characteristics,
2000 and 2016**

		BEDFORD		BLAIR		CAMBRIA	
		2016	2000	2016	2000	2016	2000
		48,852	49,984	125,917	129,144	137,762	152,598
Age	Under 18	15.6%	23.6%	15.2%	22.7%	14.5%	21.0%
	18-64	63.9%	60.0%	65.5%	59.9%	65.1%	59.3%
	65 and over	20.5%	16.5%	19.3%	17.4%	20.4%	19.7%
Race/Ethnicity	White	97.7%	98.5%	95.8%	97.6%	93.8%	95.8%
	Black	0.5%	0.4%	1.6%	1.2%	3.3%	2.8%
	Native American	0.2%	0.1%	0.0%	0.1%	0.1%	0.1%
	Asian	0.2%	0.3%	0.7%	0.4%	0.5%	0.4%
	Two or more races, other	1.1%	0.7%	1.8%	0.7%	2.3%	0.8%
	Hispanic, of any race	1.1%	0.5%	1.1%	0.5%	1.5%	0.9%
Income/Poverty	Median household income*	\$46,746	\$45,939	\$44,033	\$46,121	\$42,917	\$42,357
	Poverty rate	14.2%	10.3%	14.8%	12.6%	15.6%	12.5%
	Child poverty rate	20.2%	12.6%	21.8%	17.2%	24.9%	17.0%
Educational Attainment, Adults over 25	Less than high school	13.4%	21.7%	9.3%	16.3%	9.6%	20.0%
	H.S. diploma, some college, or associate's degree	72.9%	68.0%	71.1%	69.9%	70.2%	66.4%
	Bachelor's degree or higher	13.7%	10.3%	19.5%	13.9%	20.2%	13.7%

*Note: 2000 income has been adjusted for inflation to 2016 dollars.

Source: czbLLC analysis of U.S. Census Bureau data.

	FULTON		HUNTINGDON		SOMERSET	
	2016	2000	2016	2000	2016	2000
	14,653	14,261	45,634	45,586	76,201	80,023
	16.2%	24.6%	14.1%	21.7%	13.8%	22.3%
	64.4%	60.9%	67.3%	63.5%	65.7%	59.7%
	19.4%	14.5%	18.6%	14.8%	20.5%	18.0%
	97.1%	98.3%	91.9%	93.3%	95.5%	97.4%
	1.5%	0.7%	5.5%	5.1%	2.7%	1.6%
	0.2%	0.2%	0.0%	0.1%	0.1%	0.1%
	0.2%	0.1%	0.5%	0.2%	0.3%	0.2%
	0.8%	0.7%	2.0%	1.2%	1.4%	0.7%
	1.1%	0.4%	1.9%	1.1%	1.3%	0.7%
	\$49,429	\$48,958	\$45,250	\$46,756	\$45,424	\$43,385
	11.2%	10.8%	13.7%	11.3%	12.6%	11.8%
	15.9%	15.2%	19.4%	14.6%	20.3%	15.8%
	13.0%	26.8%	11.4%	25.4%	12.9%	22.5%
	73.6%	63.9%	74.0%	62.8%	71.7%	66.6%
	13.4%	9.3%	14.7%	11.9%	15.5%	10.8%

The county's population (and the region's) has been aging at a more rapid pace than the rest of the U.S. since 2000 – a process accelerated by a sharp decline in the population under age 18 and a simultaneous increase in the population 65 and older.

Although median household income has remained steady in Huntingdon County since 2000 and educational attainment levels have improved, poverty rates have risen – especially among children.

3 Housing

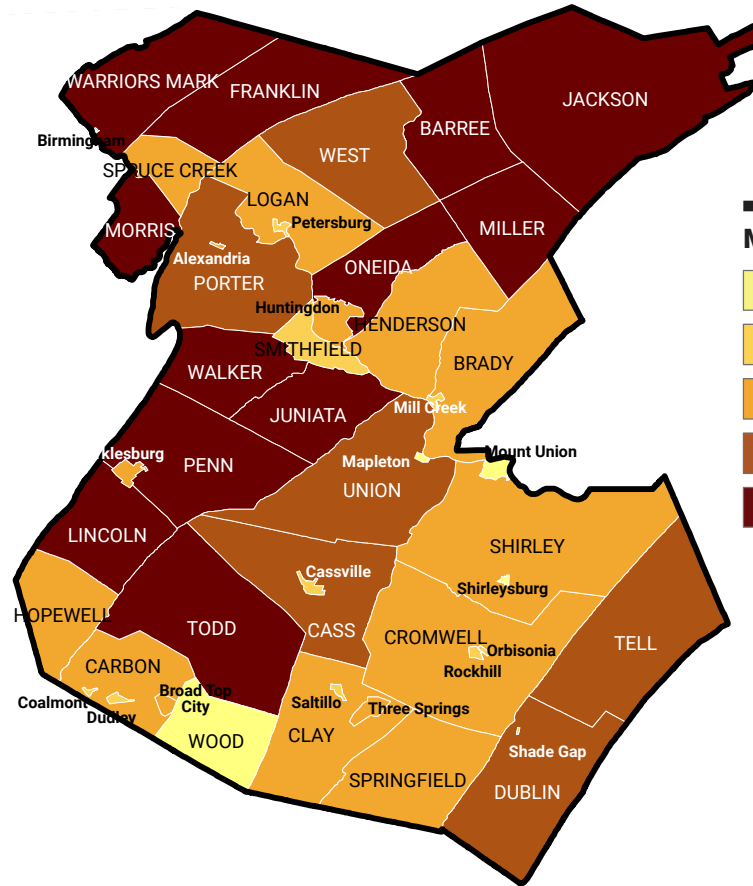
Huntingdon County has one of the region's more modern housing stocks, with nearly a quarter of all units (homes and apartments) having been developed since 1990. That number is still smaller, though, than the number of units built before 1939. Across units of all ages, 75.4% are owner-occupied – a rate that is close to the regional average.

The median value of owner-occupied homes in Huntingdon County ranks third in the region at \$120,600, and most municipalities have experienced at least modest growth in value since 2000 when inflation is accounted for. A large seasonal home market and proximity to an increasingly expensive State College market appear to be important factors in the stability and growth of some areas of the county.

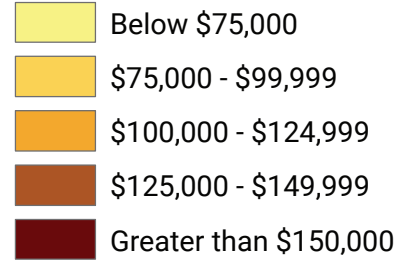
Housing Characteristics, 2016

		BEDFORD	BLAIR	CAMBRIA	FULTON	HUNTINGDON	SOMERSET
Age of Housing	Housing units	24,029	56,059	65,215	7,112	22,391	37,953
	% of units built before 1939	27.3%	32.5%	33.3%	19.8%	27.4%	29.5%
	% of units built since 1990	23.2%	15.1%	10.4%	26.1%	23.2%	18.2%
Tenure	Occupied housing units	19,757	50,954	57,214	5,989	16,975	29,630
	Owner-occupied	79.8%	70.7%	74.1%	78.3%	75.4%	78.3%
	Rented	20.2%	29.3%	25.9%	21.7%	24.6%	21.7%
Vacancy	% of units vacant	17.8%	9.1%	12.3%	15.8%	24.2%	21.9%
	% of vacant units seasonal	54.6%	15.3%	13.6%	53.1%	69.8%	64.5%
	% of vacant units abandoned	29.8%	57.2%	57.5%	30.9%	20.2%	21.3%
Cost	Median home value	\$125,000	\$112,600	\$88,200	\$151,700	\$120,600	\$100,000
	Median gross rent	\$632	\$658	\$586	\$643	\$565	\$585

Source: czbLLC analysis of U.S. Census Bureau data.

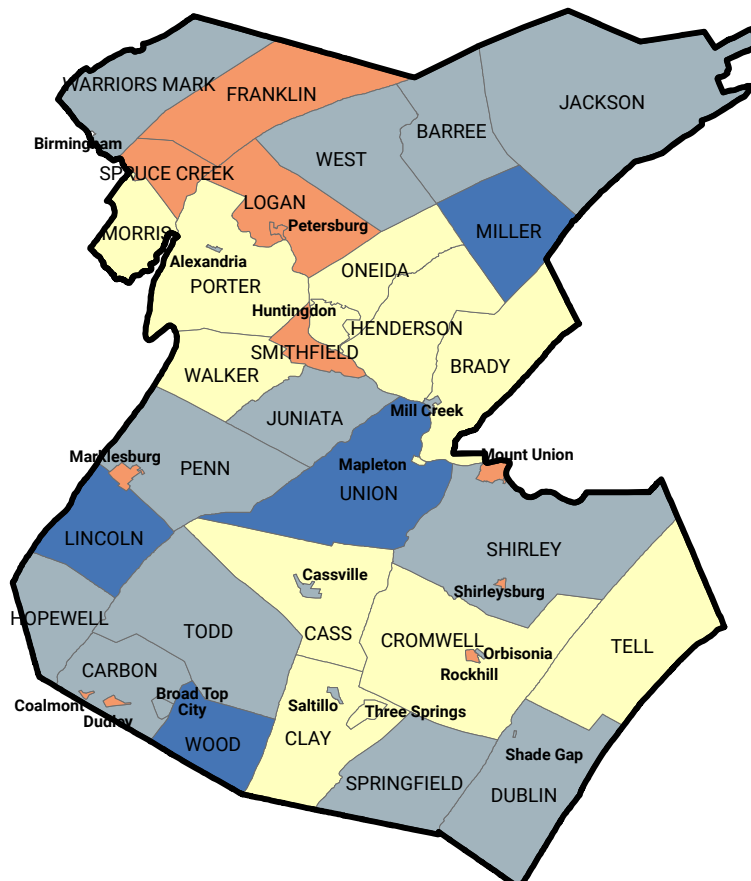


Median Value, 2016

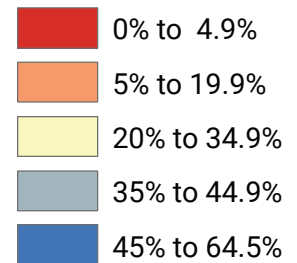


Source: czbLLC analysis of U.S. Census Bureau data.

© czbLLC



Change in Median Value, 2000-2016 (inflation adjusted)



Source: czbLLC analysis of U.S. Census Bureau data.

© czbLLC

4 Economy

With Juniata College and J.C. Blair Memorial Hospital as two of the county's largest employers, the educational services and health care sector employ over 27% of Huntingdon County's workforce -- the second-highest rate in the region. The remainder of the county's economy is highly diversified, with no other sector contributing more than 15% of overall employment.

Current plans and initiatives related to economic development include the CEDS (Comprehensive Economic Development Strategy) maintained by SAPDC, as well as organizational strategic plans maintained by Huntingdon County Business & Industry and the Huntingdon County Chamber of Commerce.

Labor Force and Employment, 2016

	BEDFORD	BLAIR	CAMBRIA	FULTON	HUNTINGDON	SOMERSET
Civilian labor force	23,728	60,515	62,862	7,153	19,972	35,188
Unemployment Rate	6.2%	5.8%	8.3%	6.0%	7.3%	6.7%
Worked at home	4.5%	2.5%	2.6%	3.6%	3.7%	4.4%
Mean travel time to work (minutes)	27.4	19.5	24	31.5	29.3	23.9
Civilian employed population 16 years and over	22,253	56,996	57,641	6,724	18,516	32,847
Agriculture, forestry, fishing and hunting, and mining	4.8%	1.6%	1.8%	3.9%	3.1%	4.7%
Construction	9.0%	5.9%	5.3%	9.8%	9.6%	7.4%
Manufacturing	14.4%	11.3%	9.3%	21.7%	13.7%	12.4%
Wholesale trade	2.3%	3.0%	2.6%	2.0%	1.8%	2.5%
Retail trade	13.5%	14.8%	12.3%	10.9%	10.5%	11.6%
Transportation and warehousing, and utilities	7.4%	6.7%	6.2%	5.9%	5.4%	7.5%
Information	1.1%	1.4%	1.3%	1.1%	1.2%	0.9%
Finance and insurance, and real estate and rental and leasing	3.0%	4.1%	5.3%	3.4%	3.4%	4.3%
Professional, scientific, and management, and administrative and waste management services	6.7%	6.6%	7.4%	5.0%	5.4%	6.4%
Educational services, and health care and social assistance	18.7%	26.1%	29.8%	19.7%	27.2%	23.4%
Arts, entertainment, and recreation, and accommodation and food services	9.7%	9.5%	8.0%	5.6%	7.1%	8.2%
Other services, except public administration	5.1%	5.1%	4.8%	4.7%	3.8%	5.7%
Public administration	4.4%	4.0%	5.8%	6.4%	7.8%	5.0%

Source: czbLLC analysis of U.S. Census Bureau data.

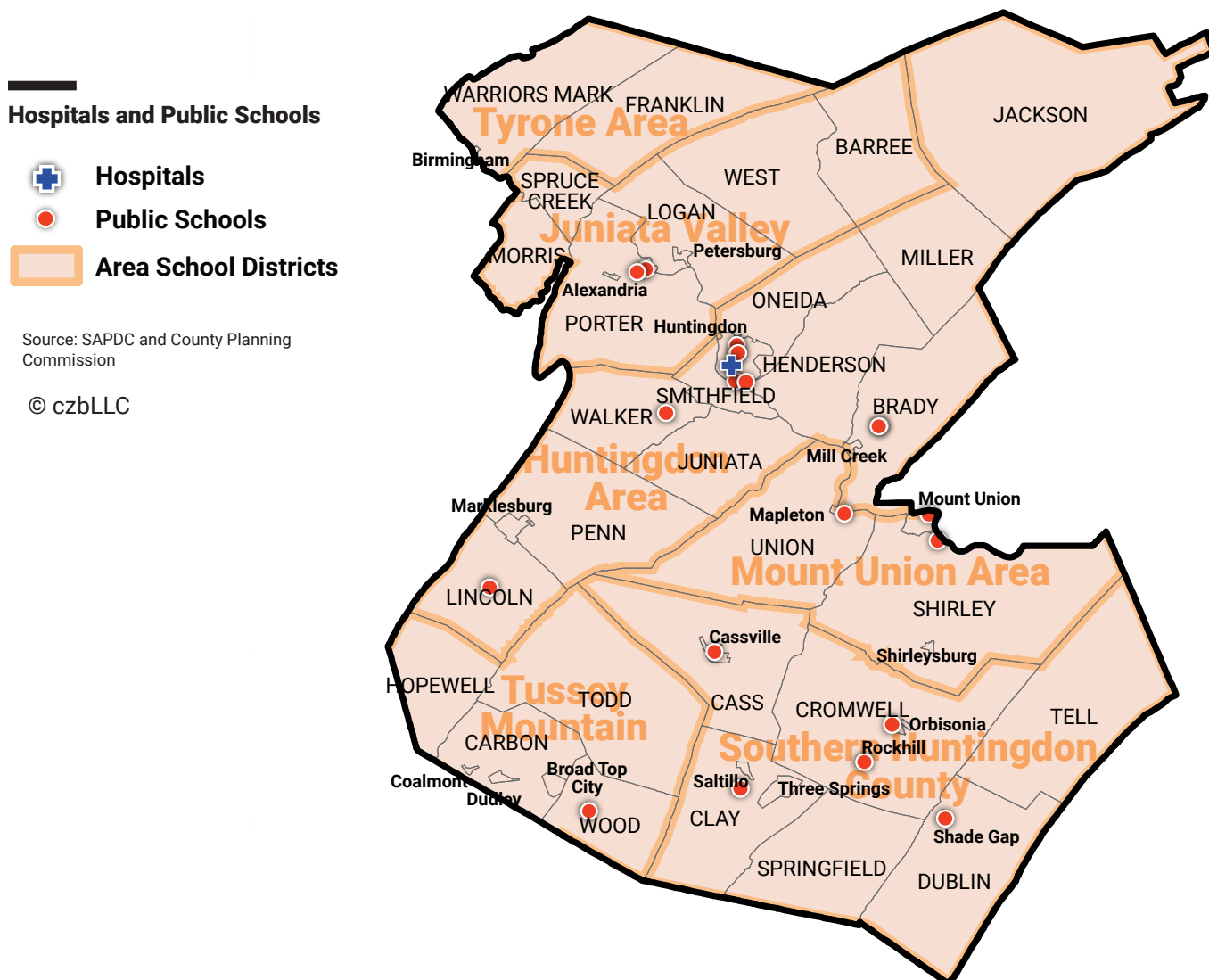
5 Transportation and Mobility

Transportation planning and investment in Huntingdon County is guided by the Southern Alleghenies Planning & Development Council (SAPDC), which serves as the state-designated Rural Planning Organization (RPO) for Bedford, Fulton, Huntingdon, and Somerset counties.

RPO plans include the Southern Alleghenies Transportation Improvement Program (TIP), the Twelve Year Plan (TYP), and the Long Range Transportation Plan (LRTP). The LRTP has a current planning horizon of 2017-2041.

Other plans maintained by the RPO include a Regional Bicycle and Pedestrian Plan and a Coordinated Transit and Human Services Plan.

6 Community Facilities and Services



Public Schools

Public education (K-12) is provided to students in Huntingdon County by six school districts, three of which (Southern Huntingdon County, Huntingdon Area, and Juniata Valley) are contained entirely within the county. Huntingdon County Career & Technology Center provides career-focused training.

Health Centers

J.C. Blair Memorial Hospital in Huntingdon Borough is a traditional hospital with a department of emergency medicine and numerous inpatient and outpatient services.

Senior Services

The Huntingdon-Bedford-Fulton Area Agency on Aging provides services to senior citizens throughout Huntingdon County and operates senior centers in the following communities: Huntingdon, Mount Union, Petersburg, and Three Springs.

Emergency Services

Law enforcement services are provided in Huntingdon County by the Pennsylvania State Police and by police departments in Huntingdon, Mount Union, and Juniata Valley (Petersburg, Alexandria, and Porter). Huntingdon County's

Emergency Management Agency oversees disaster preparedness training and planning, and maintains a current directory of volunteer fire protection and EMS services in the county.

7 Infrastructure and Utilities

Electricity

First Energy Corporation is the primary electric provider in Huntingdon County through its Penelec subsidiary.

The Valley Rural Electric Cooperative operates within Huntingdon County, as well as in neighboring Blair and Fulton counties.

Heating Fuel

Just under 50% of housing units in Bedford County use fuel oil or kerosene for heating, making this the dominant heating source in the county followed by electricity and wood. Utility gas heats fewer than 10% of homes in the county, most of which are concentrated in Huntingdon and Mount Union boroughs.

Water and sewer Services

The Pennsylvania Department of Environmental Protection maintains an inventory of public drinking water systems and provides public access to this information through the Drinking Water Reporting System (DWRS). According to the system, there are currently 20 active community water systems in Huntingdon County. There are also 21 public sewer systems in the county. An Infrastructure Investment Strategy and Water Supply Plan was completed in 2007.

Lawful activities such as extraction of minerals may impact water supply sources and such activities are governed by statutes regulating mineral extraction that specify replacement and restoration of water supplies affected by such activities.

Home Heating Fuel Sources, 2016

	BEDFORD	BLAIR	CAMBRIA	FULTON	HUNTINGDON	SOMERSET
Utility gas	4.1%	56.8%	45.2%	0.7%	8.1%	19.1%
Bottled, tank, or LP gas	2.9%	1.4%	1.8%	4.3%	3.2%	4.4%
Electricity	21.0%	12.7%	11.9%	28.8%	18.1%	16.6%
Fuel oil, kerosene	49.3%	22.3%	29.9%	40.0%	48.9%	39.4%
Coal or coke	3.3%	1.6%	6.6%	1.5%	3.3%	12.0%
Wood	16.9%	3.6%	3.5%	23.2%	16.4%	7.2%
Solar energy	0.1%	0.1%	0.0%	0.1%	0.0%	0.0%
Other/none	2.2%	1.5%	1.3%	1.4%	1.9%	1.3%

Source: czbLLC analysis of U.S. Census Bureau data.

8 Environment and Natural Resources

The provisions for municipal stormwater and floodplain management within Huntingdon County are regulated by Act 167, the Pennsylvania Stormwater Management Act, and Act 166, the Pennsylvania Floodplain Management Act.

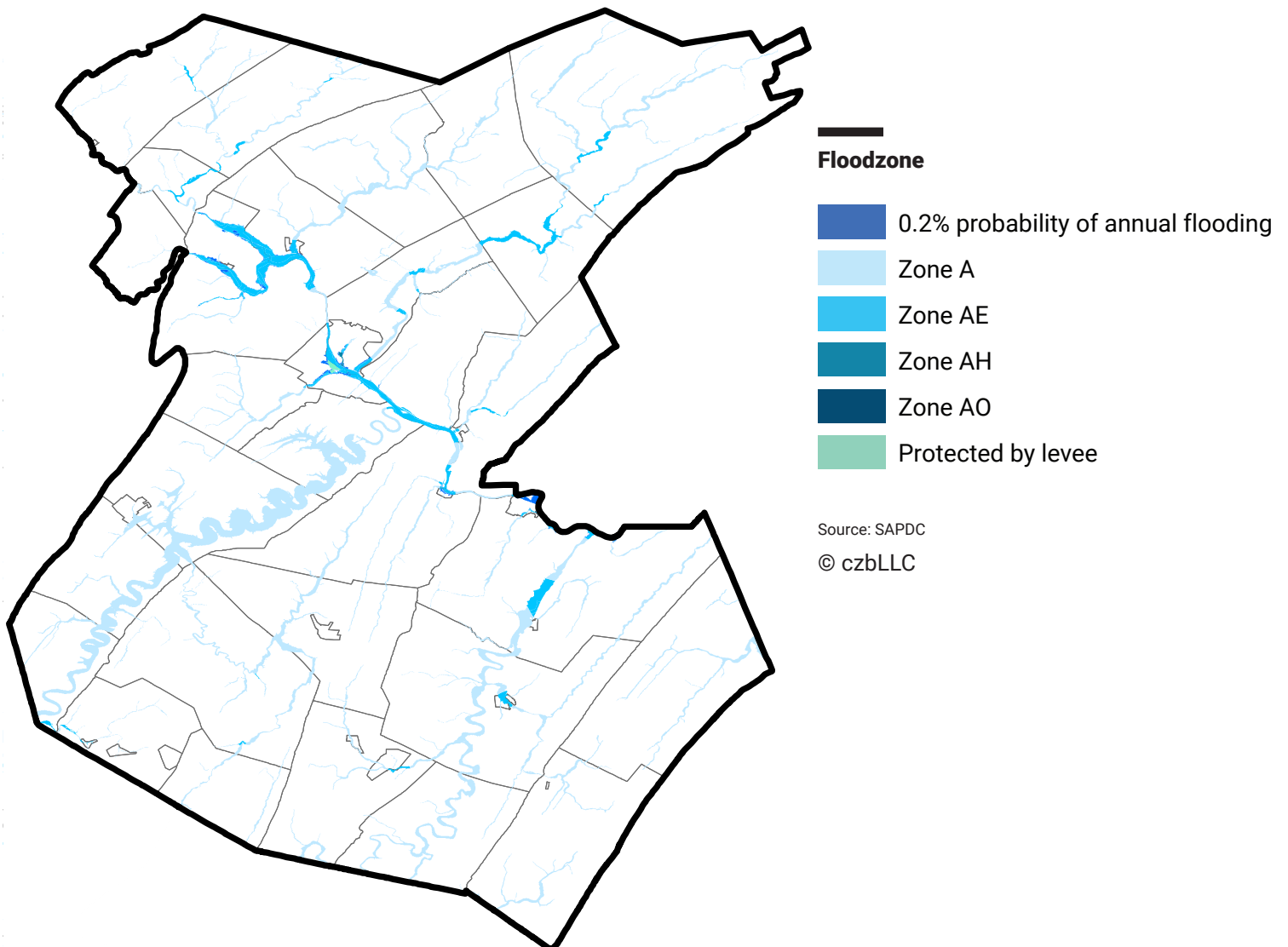
Several planning initiatives in Huntingdon County relate to the management and preservation of environmental resources, as well as the development of recreational assets that provide greater public access to the county's natural assets. Among these recent efforts are the following:

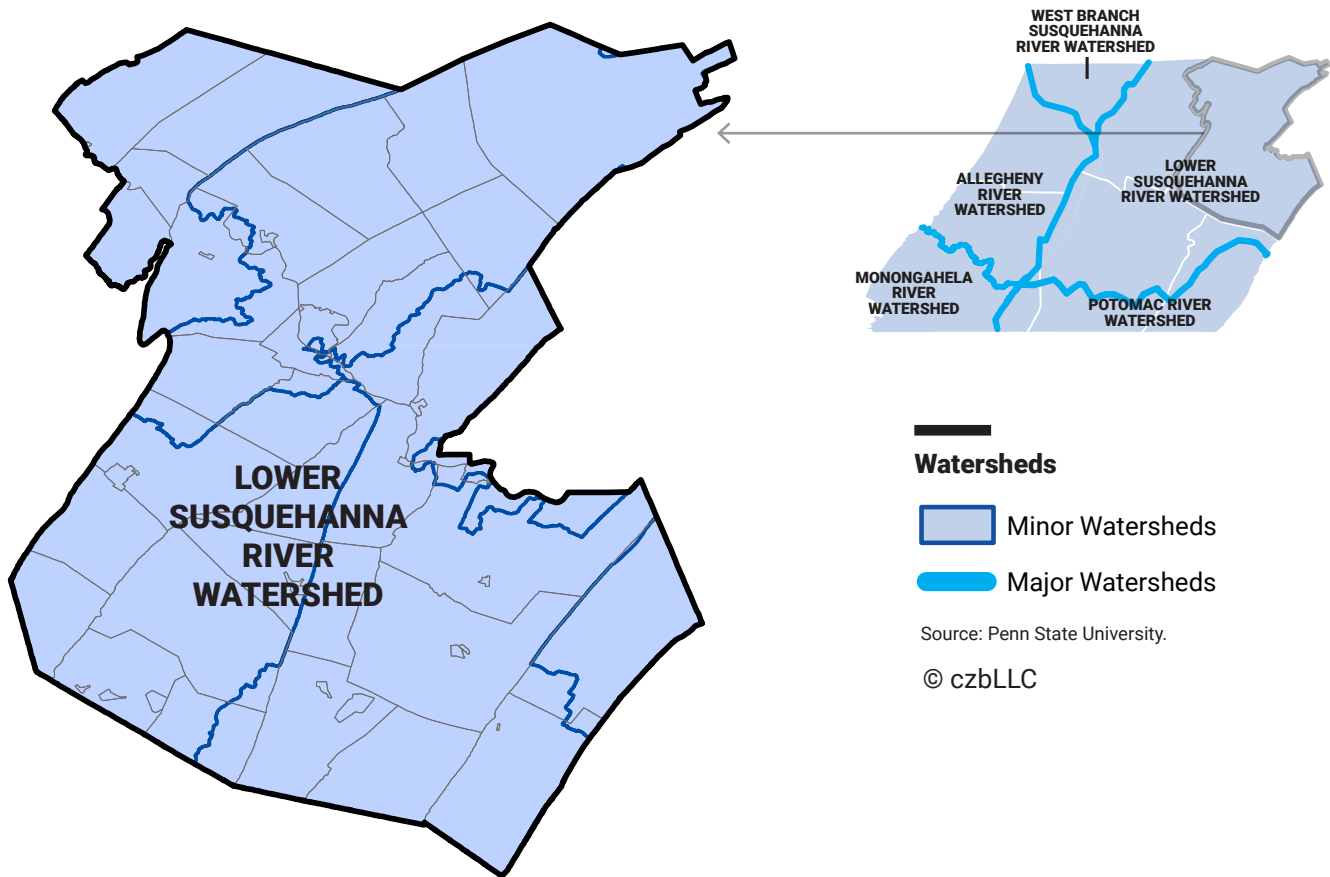
Southern Alleghenies Greenways and Open Space Network Plan

Regional Bicycle and Pedestrian Plan (SAPDC RPO)


Huntingdon County Natural Heritage Inventory

Huntingdon County Hazard Mitigation Plan



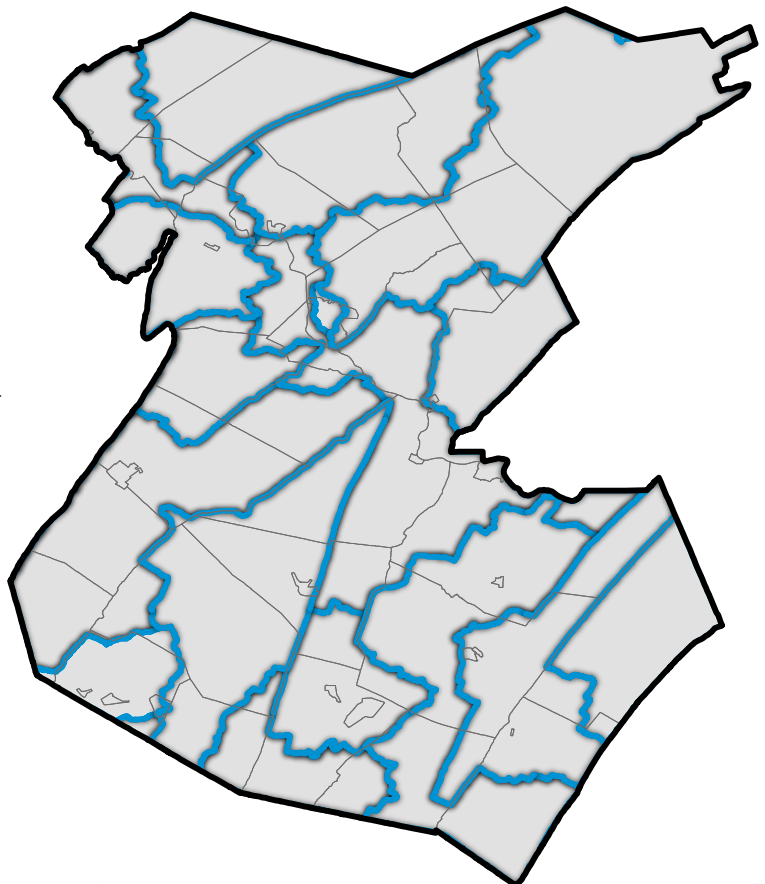


**Stormwater Drainage Areas
(Act 167)**

 Stormwater Drainage Areas

Source: Pennsylvania Dept. of Environmental Protection.

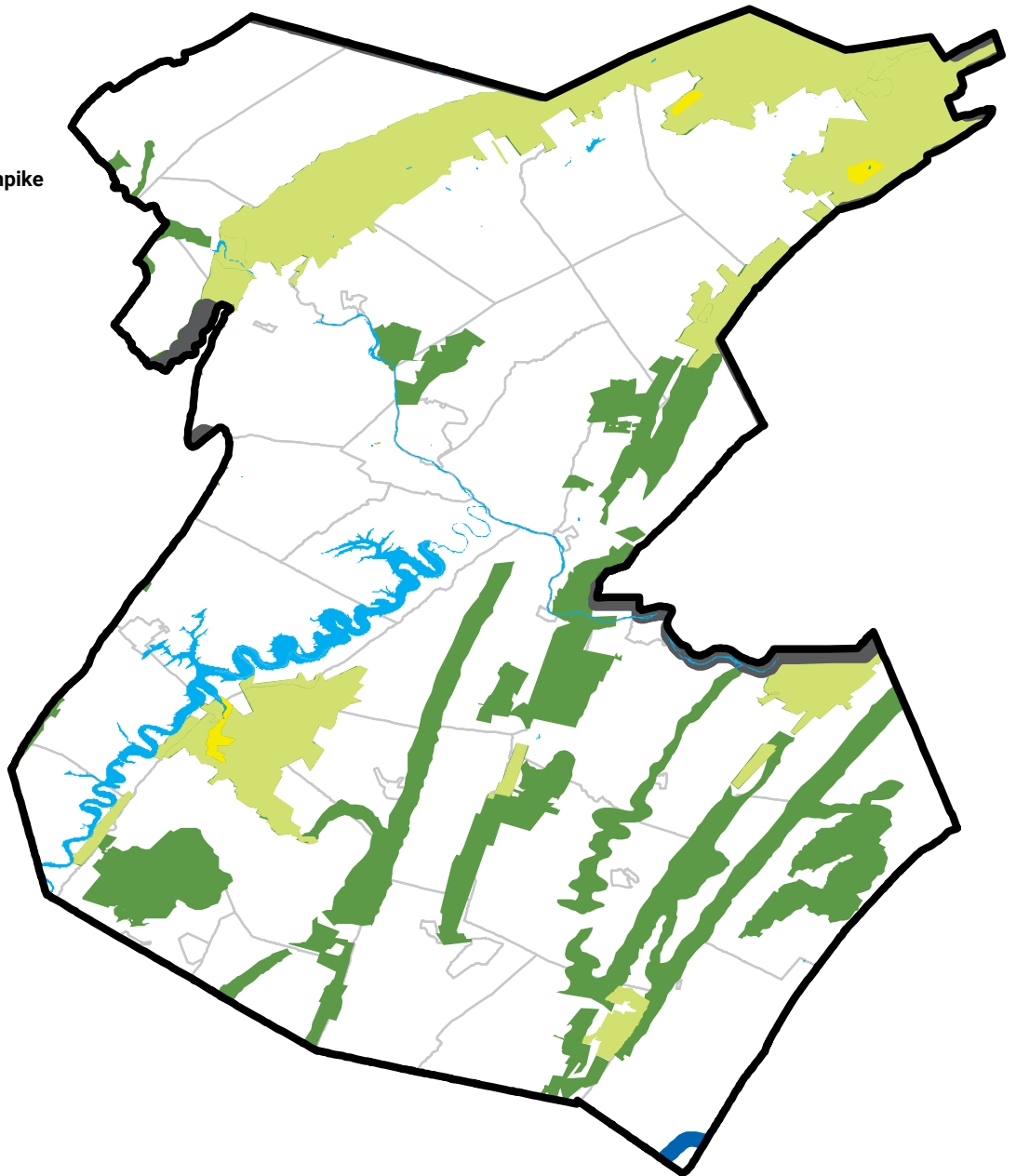
© czbLLC



Greenspace

-  Interstates and PA Turnpike
-  State Parks
-  State Forestland
-  Additional Greenspace
-  DCNR Rails to Trails
-  Water Bodies

© czbLLC



9 Historic and Cultural Resources

Huntingdon County contains numerous sites of historic and cultural importance, 42 of which have been successfully nominated to the National Register of Historic Places. This designation affords limited protection from adverse effects of federally or state assisted projects, but does not impact private use or treatment of properties unless private owners choose to use historic preservation tax credits to finance improvements.

Although 14 of the National Register listings in the county are districts with multiple contributing properties, there are currently no local historic district under the PA Historic District Act. Establishment and certification of a local historic district in Pennsylvania empowers local governing bodies to regulate the erection, reconstruction, alteration, restoration, demolition or razing of buildings within district boundaries. Huntingdon Borough, however, does have a preservation zoning overlay.

Recent contributions to historic and cultural resource planning in the county include the 2015 County Heritage Plan, with its extensive resource inventory and strategic management recommendations.

Historic Site Designations and Preservation Planning

	BEDFORD	BLAIR	CAMBRIA	FULTON	HUNTINGDON	SOMERSET
Listings on the National Register of Historic Places	32	28	30	8	42	31
National Register Listings that are districts with multiple contributing structures	6	9	13	4	14	9
Locally-designated historic districts	1	1	1	0	0	0
Municipalities with preservation zoning overlays	0	2	2	1	1	0

Source: Pennsylvania State Historic Preservation Office (PASHPO); National Park Service.

PART 2

Comprehensive Plan for the Southern Alleghenies Region

JUNE 2018

Huntingdon County

