

Three Year Community Development Plan

Huntingdon Borough

(FFY 2023, FFY 2024, FFY 2025)

Introduction

Beginning in 2015, in accordance with a mandate from the Pennsylvania Department of Community and Economic Development, the Huntingdon Borough CDBG Entitlement Program is administered by Huntingdon County on behalf of Huntingdon Borough. Huntingdon Borough retains authority to select activities to be funded. However, the State-mandated consolidation requires that the County accept responsibility for all areas of CDBG Program compliance from 2015 forward.

While decisions on how CDBG funds are to be used are made by Huntingdon Borough Council, the Huntingdon County Community Development Administrator coordinates CDBG Program matters through the Huntingdon Borough Community Development Committee, the Huntingdon Borough Manager and the Huntingdon Borough Secretary. The Huntingdon Borough Community Development Committee is made up of members of the Huntingdon Borough Council. The Committee holds a public meeting each month and other meetings as needed. This Committee evaluates the Borough's community development needs and makes recommendations to the Borough Council about the Borough's planning and community development priorities.

At least two public hearings are held for Borough Council members and the public to review the Borough's past use of CDBG funds and to discuss community needs. These discussions include evaluation of low and moderate income benefit as well as recent planning studies. Huntingdon Borough completed a strategic planning process in 2017 that identified five Action Plan Goals.

The PA DCED requires grantees to use data from the American Community Survey of 2015 to determine areas of Low and Moderate Income Benefit. Maps showing the block groups and their corresponding low and moderate income populations are attached.

For FFY 2023, the Borough's proposed use of their CDBG entitlement allocation is for rehabilitation of the 7th Street parking lot. CDBG funding in the amount of \$103,348.00 will be utilized for the activity and the remaining 18% or \$22,686.00 will be utilized for program administration. Per the executed Huntingdon County and Huntingdon Borough Cooperation Agreement, a maximum of \$3,500.00 of program administrative funding will also be allocated to Huntingdon Borough.

Borough Census Information and limited Low and Moderate benefit as a result of the 2010 Census.

The 2010 Census indicated that the Borough gained 2.5% for a population of 7,093.

In 2004 the Borough surveyed the population of Huntingdon Borough to determine the total level of low and moderate-income individuals. The Borough conducted a survey to update the 1999 Income Survey and to determine if the population changed since the 2000 census in regards to the low and moderate percentages provided by the U. S. Census. Below are the Borough's new figures.

For the 2023 Application, the Borough will use the American Community Survey and the 2010 Census data to determine the neighborhoods and areas CDBG Funds may be used within the Borough.

Table 1
Huntingdon Borough as represented by
the American Community Survey and the 2010 Census

| Block | Tract | Low/Mod Percent | Population | Housing Units |
|-------|--------|-----------------|------------|---------------|
| 1 | 950400 | 11.06% | 1,818 | 451 |
| 2 | 950400 | 16.52% | 1,109 | 493 |
| 3 | 950400 | 65.85% | 1,165 | 372 |
| 4 | 950400 | 53.97% | 1,185 | 652 |
| 5 | 950400 | 56.41% | 548 | 262 |
| 6 | 950400 | 35.98% | 1,268 | 681 |
| Total | | | 7,093 | 2,911 |

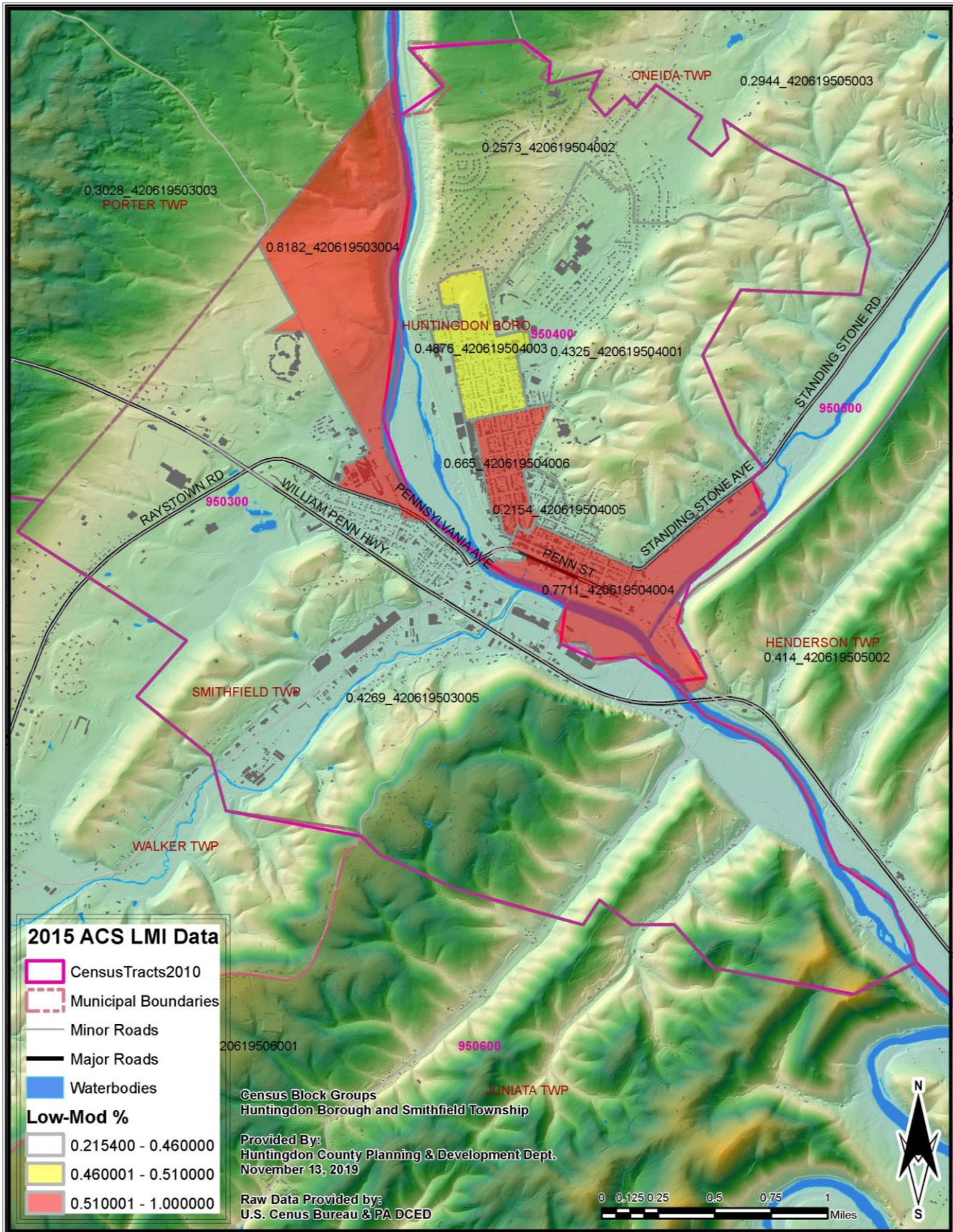
For historical context, data from past applications is presented below.

The 2001 survey is shown in Table Three below. The information is presented to compare the 1999 survey and the 2000 census as well as the 2004 income survey. The percentage of low and moderate-income persons as calculated by the U.S. Department of Housing and Urban Development for Huntingdon Borough for FFY 2000. Using this data (2000 Census), only two blocks, group five (5) and six (6) were showing 51% or greater low and moderate-income persons. The Borough recognizes that selected projects must meet the "minority benefit" test.

Completion of the survey, allowed the Borough greater flexibility in spending the CDBG funds for recreation, and improvements to the downtown.

A list of the survey procedures and survey forms were submitted to the Department of Community and Economic Development on December 7, 2004 and revised December 17, 2004. As required by the survey standards, the Borough was to survey 400 families, for a universe of 2,701 or more families. However, the Borough surveyed 619 families. The Borough surveyed door to door 619 families or about every fourth (4) family. The database used for the survey was the Borough's recycling container list. This list was used because everyone in the Borough is required to recycle. Large housing units for low and moderate-income residents were treated as single family units and every fifth unit was surveyed. This population was included with the survey.

2015 ACS LMI DATA – HUNTINGDON BOROUGH



2010 CENSUS DATA FOR HUNTINGDON BOROUGH BLOCK GROUPS

| SF 1 H1 - Housing Units | | Geography | Block Group 1 | Block Group 2 | Block Group 3 | Block Group 4 | Block Group 5 | Block Group 6 |
|---|--|-----------|---------------|---------------|---------------|---------------|---------------|---------------|
| D001 | Total | | 451 | 493 | 372 | 652 | 262 | 681 |
| SF 1 H3 - Occupancy Status | | | | | | | | |
| D001 | Total | | 451 | 493 | 372 | 652 | 262 | 681 |
| D002 | Occupied | | 417 | 466 | 355 | 591 | 227 | 618 |
| D003 | Vacant | | 34 | 27 | 17 | 61 | 35 | 63 |
| SF 1 H10 - Total Population in Occupied Housing Units | | | | | | | | |
| D001 | Total | | 984 | 1048 | 803 | 1126 | 548 | 1264 |
| SF 1 H13 - Household Size | | | | | | | | |
| D001 | Total | | 417 | 466 | 355 | 591 | 227 | 618 |
| D002 | 1-person household | | 113 | 128 | 119 | 319 | 69 | 277 |
| D003 | 2-person household | | 160 | 206 | 114 | 126 | 74 | 175 |
| D004 | 3-person household | | 72 | 55 | 63 | 79 | 36 | 81 |
| D005 | 4-person household | | 41 | 49 | 38 | 38 | 29 | 51 |
| D006 | 5-person household | | 17 | 22 | 15 | 14 | 14 | 22 |
| D007 | 6-person household | | 12 | 5 | 3 | 9 | 2 | 8 |
| D008 | 7-or-more-person household | | 2 | 1 | 3 | 6 | 3 | 4 |
| SF 1 P1 - Total Population | | | | | | | | |
| D001 | Total | | 1818 | 1109 | 1165 | 1185 | 548 | 1268 |
| SF 1 P3 - Race | | | | | | | | |
| D001 | Total | | 1818 | 1109 | 1165 | 1185 | 548 | 1268 |
| D002 | White alone | | 1698 | 1063 | 1108 | 1115 | 518 | 1209 |
| D003 | Black or African American alone | | 30 | 15 | 14 | 38 | 8 | 32 |
| D004 | American Indian and Alaska Native alone | | 3 | 0 | 0 | 0 | 0 | 2 |
| D005 | Asian alone | | 40 | 13 | 25 | 8 | 17 | 4 |
| D006 | Native Hawaiian and Other Pacific Islander alone | | 0 | 0 | 0 | 0 | 0 | 0 |
| D007 | Some Other Race alone | | 12 | 1 | 5 | 2 | 0 | 2 |
| D008 | Two or More Races | | 35 | 17 | 13 | 22 | 5 | 19 |
| SR 1 P6 - Race (Total Races Tallied) | | | | | | | | |
| D001 | Total races tallied | | 1860 | 1129 | 1180 | 1208 | 554 | 1288 |
| D002 | White alone or in combination with one or more other races | | 1730 | 1077 | 1120 | 1137 | 523 | 1228 |
| D003 | Black or African American alone or in combination with one or more other races | | 41 | 22 | 17 | 51 | 13 | 41 |
| D004 | American Indian and Alaska Native alone or in combination with one or more other races | | 11 | 4 | 6 | 8 | 1 | 4 |
| D005 | Asian alone or in combination with one or more other races | | 55 | 20 | 31 | 10 | 17 | 13 |
| D006 | Native Hawaiian and Other Pacific Islander alone or in combination with one or more other races | | 4 | 2 | 1 | 0 | 0 | 0 |
| D007 | Some Other Race alone or in combination with one or more other races | | 19 | 4 | 5 | 2 | 0 | 2 |
| SF 1 P6 - Race | | | | | | | | |
| D001 | Total | | 1818 | 1109 | 1165 | 1185 | 548 | 1268 |
| D002 | Population of one race: | | 1783 | 1092 | 1152 | 1163 | 543 | 1249 |
| D003 | Population of one race: - White alone | | 1698 | 1063 | 1108 | 1115 | 518 | 1209 |
| D004 | Population of one race: - Black or African American alone | | 30 | 15 | 14 | 38 | 8 | 32 |
| | | Geography | Block Group 1 | Block Group 2 | Block Group 3 | Block Group 4 | Block Group 5 | Block Group 6 |
| D005 | Population of one race: - American Indian and Alaska Native alone | | 3 | 0 | 0 | 0 | 0 | 2 |
| D006 | Population of one race: - Asian alone | | 40 | 13 | 25 | 8 | 17 | 4 |
| D007 | Population of one race: - Native Hawaiian and Other Pacific Islander alone | | 0 | 0 | 0 | 0 | 0 | 0 |
| D008 | Population of one race: - Some Other Race alone | | 12 | 1 | 5 | 2 | 0 | 2 |
| D009 | Two or More Races: | | 35 | 17 | 13 | 22 | 5 | 19 |
| D010 | Two or More Races: - Population of two races: | | 29 | 14 | 11 | 21 | 4 | 18 |
| D011 | Two or More Races: - Population of two races: - White; Black or African American | | 6 | 1 | 2 | 12 | 4 | 8 |
| D012 | Two or More Races: - Population of two races: - White; American Indian and Alaska Native | | 5 | 0 | 4 | 8 | 0 | 2 |
| D013 | Two or More Races: - Population of two races: - White; Asian | | 13 | 7 | 4 | 1 | 0 | 8 |
| D014 | Two or More Races: - Population of two races: - White; Native Hawaiian and Other Pacific Islander | | 0 | 0 | 0 | 0 | 0 | 0 |
| D015 | Two or More Races: - Population of two races: - White; Some Other Race | | 2 | 3 | 0 | 0 | 0 | 0 |
| D016 | Two or More Races: - Population of two races: - Black or African American; American Indian and Alaska Native | | 0 | 3 | 0 | 0 | 0 | 0 |
| D017 | Two or More Races: - Population of two races: - Black or African American; Asian | | 1 | 0 | 0 | 0 | 0 | 0 |
| D018 | Two or More Races: - Population of two races: - Black or African American; Native Hawaiian and Other Pacific Islander | | 0 | 0 | 0 | 0 | 0 | 0 |
| D019 | Two or More Races: - Population of two races: - Black or African American; Some Other Race | | 0 | 0 | 0 | 0 | 0 | 0 |
| D020 | Two or More Races: - Population of two races: - American Indian and Alaska Native; Asian | | 0 | 0 | 1 | 0 | 0 | 0 |
| D021 | Two or More Races: - Population of two races: - American Indian and Alaska Native; Native Hawaiian and Other Pacific Islander | | 0 | 0 | 0 | 0 | 0 | 0 |
| D022 | Two or More Races: - Population of two races: - American Indian and Alaska Native; Some Other Race | | 0 | 0 | 0 | 0 | 0 | 0 |
| D023 | Two or More Races: - Population of two races: - Asian; Native Hawaiian and Other Pacific Islander | | 0 | 0 | 0 | 0 | 0 | 0 |
| D024 | Two or More Races: - Population of two races: - Asian; Some Other Race | | 0 | 0 | 0 | 0 | 0 | 0 |
| D025 | Two or More Races: - Population of two races: - Native Hawaiian and Other Pacific Islander; Some Other Race | | 2 | 0 | 0 | 0 | 0 | 0 |
| D026 | Two or More Races: - Population of three races: | | 5 | 3 | 2 | 1 | 1 | 1 |
| D027 | Two or More Races: - Population of three races: - White; Black or African American; American Indian and Alaska Native | | 3 | 1 | 1 | 0 | 1 | 0 |
| D028 | Two or More Races: - Population of three races: - White; Black or African American; Asian | | 0 | 0 | 0 | 1 | 0 | 1 |
| D029 | Two or More Races: - Population of three races: - White; Black or African American; Native Hawaiian and Other Pacific Islander | | 0 | 2 | 0 | 0 | 0 | 0 |
| D030 | Two or More Races: - Population of three races: - White; Black or African American; Some Other Race | | 0 | 0 | 0 | 0 | 0 | 0 |
| D031 | Two or More Races: - Population of three races: - White; American Indian and Alaska Native; Asian | | 0 | 0 | 0 | 0 | 0 | 0 |

2010 CENSUS DATA FOR HUNTINGDON BOROUGH BLOCK GROUPS

| Geography | | Block Group 1 | Block Group 2 | Block Group 3 | Block Group 4 | Block Group 5 | Block Group 6 |
|---|---|---------------|---------------|---------------|---------------|---------------|---------------|
| SF 1 P12 - Sex by Age | | | | | | | |
| D001 | Total | 1818 | 1109 | 1165 | 1185 | 548 | 1268 |
| D002 | Male: | 869 | 499 | 492 | 594 | 269 | 587 |
| D003 | Male: - Under 5 years | 29 | 22 | 15 | 50 | 16 | 47 |
| D004 | Male: - 5 to 9 years | 29 | 34 | 19 | 33 | 22 | 35 |
| D005 | Male: - 10 to 14 years | 33 | 24 | 27 | 31 | 15 | 40 |
| D006 | Male: - 15 to 17 years | 23 | 19 | 15 | 17 | 10 | 17 |
| D007 | Male: - 18 and 19 years | 200 | 9 | 24 | 19 | 8 | 19 |
| D008 | Male: - 20 years | 114 | 2 | 51 | 13 | 2 | 4 |
| D009 | Male: - 21 years | 52 | 3 | 60 | 10 | 4 | 11 |
| D010 | Male: - 22 to 24 years | 52 | 9 | 37 | 49 | 13 | 33 |
| D011 | Male: - 25 to 29 years | 27 | 17 | 23 | 54 | 28 | 39 |
| D012 | Male: - 30 to 34 years | 21 | 26 | 18 | 46 | 15 | 40 |
| D013 | Male: - 35 to 39 years | 24 | 28 | 19 | 35 | 19 | 30 |
| D014 | Male: - 40 to 44 years | 26 | 23 | 26 | 36 | 23 | 39 |
| D015 | Male: - 45 to 49 years | 39 | 25 | 22 | 39 | 21 | 41 |
| D016 | Male: - 50 to 54 years | 27 | 42 | 26 | 37 | 20 | 48 |
| D017 | Male: - 55 to 59 years | 39 | 34 | 27 | 40 | 13 | 37 |
| D018 | Male: - 60 and 61 years | 14 | 13 | 8 | 8 | 9 | 16 |
| D019 | Male: - 62 to 64 years | 27 | 26 | 12 | 24 | 5 | 23 |
| D020 | Male: - 65 and 66 years | 12 | 11 | 9 | 12 | 6 | 7 |
| D021 | Male: - 67 to 69 years | 10 | 16 | 5 | 8 | 9 | 11 |
| D022 | Male: - 70 to 74 years | 27 | 26 | 10 | 16 | 6 | 14 |
| D023 | Male: - 75 to 79 years | 20 | 35 | 17 | 6 | 4 | 16 |
| D024 | Male: - 80 to 84 years | 11 | 31 | 20 | 7 | 1 | 7 |
| D025 | Male: - 85 years and over | 13 | 24 | 2 | 4 | 0 | 13 |
| D026 | Female: | 949 | 610 | 673 | 591 | 279 | 681 |
| D027 | Female: - Under 5 years | 17 | 25 | 20 | 44 | 19 | 37 |
| D028 | Female: - 5 to 9 years | 27 | 29 | 18 | 35 | 17 | 41 |
| D029 | Female: - 10 to 14 years | 32 | 32 | 28 | 33 | 20 | 31 |
| D030 | Female: - 15 to 17 years | 22 | 26 | 17 | 20 | 16 | 25 |
| D031 | Female: - 18 and 19 years | 197 | 6 | 112 | 19 | 6 | 9 |
| D032 | Female: - 20 years | 109 | 3 | 76 | 12 | 4 | 7 |
| D033 | Female: - 21 years | 56 | 5 | 67 | 2 | 7 | 17 |
| D034 | Female: - 22 to 24 years | 50 | 8 | 56 | 41 | 14 | 46 |
| D035 | Female: - 25 to 29 years | 32 | 17 | 32 | 42 | 14 | 47 |
| D036 | Female: - 30 to 34 years | 30 | 24 | 26 | 30 | 17 | 49 |
| D037 | Female: - 35 to 39 years | 34 | 36 | 22 | 19 | 25 | 32 |
| D038 | Female: - 40 to 44 years | 26 | 20 | 21 | 40 | 15 | 27 |
| D039 | Female: - 45 to 49 years | 39 | 37 | 16 | 43 | 17 | 54 |
| D040 | Female: - 50 to 54 years | 44 | 41 | 25 | 48 | 21 | 41 |
| D041 | Female: - 55 to 59 years | 35 | 45 | 33 | 39 | 18 | 34 |
| D042 | Female: - 60 and 61 years | 30 | 17 | 7 | 16 | 5 | 22 |
| D043 | Female: - 62 to 64 years | 19 | 30 | 15 | 12 | 7 | 21 |
| D044 | Female: - 65 and 66 years | 13 | 11 | 6 | 10 | 3 | 10 |
| D045 | Female: - 67 to 69 years | 15 | 20 | 10 | 12 | 5 | 20 |
| D046 | Female: - 70 to 74 years | 32 | 33 | 24 | 23 | 10 | 21 |
| D047 | Female: - 75 to 79 years | 24 | 40 | 13 | 19 | 10 | 25 |
| SF 1 P13 - Median Age by Sex | | | | | | | |
| D048 | Female: - 80 to 84 years | 27 | 47 | 15 | 18 | 6 | 29 |
| D049 | Female: - 85 years and over | 39 | 58 | 14 | 14 | 3 | 36 |
| SF 1 P 18 - Household Type | | | | | | | |
| D001 | Total | 417 | 466 | 355 | 591 | 227 | 618 |
| D002 | Family households: | 273 | 324 | 204 | 226 | 138 | 296 |
| D003 | Family households: - Husband-wife family | 225 | 278 | 144 | 104 | 88 | 182 |
| D004 | Family households: - Other family: | 48 | 46 | 60 | 122 | 50 | 114 |
| D005 | Family households: - Other family: - Male householder, no wife present | 8 | 13 | 18 | 27 | 15 | 28 |
| D006 | Family households: - Other family: - Female householder, no husband present | 40 | 33 | 42 | 95 | 35 | 86 |
| D007 | Nonfamily households: | 144 | 142 | 151 | 365 | 89 | 322 |
| D008 | Nonfamily households: - Householder living alone | 113 | 128 | 119 | 319 | 69 | 277 |
| D009 | Nonfamily households: - Householder not living alone | 31 | 14 | 32 | 46 | 20 | 45 |
| SF 1 P 42 - Group Quarters Population by Group Quarters Type | | | | | | | |
| D001 | Total | 834 | 61 | 362 | 59 | 0 | 4 |
| D002 | Institutionalized population (101-106, 201-203, 301, 401-405): | 75 | 59 | 0 | 54 | 0 | 0 |
| D003 | Institutionalized population (101-106, 201-203, 301, 401-405) - Correctional facilities for adults (101-106) | 0 | 0 | 0 | 54 | 0 | 0 |
| D004 | Institutionalized population (101-106, 201-203, 301, 401-405) - Juvenile facilities (201-203) | 0 | 0 | 0 | 0 | 0 | 0 |
| D005 | Institutionalized population (101-106, 201-203, 301, 401-405) - Nursing facilities/Skilled-nursing facilities (301) | 75 | 59 | 0 | 0 | 0 | 0 |
| D006 | Institutionalized population (101-106, 201-203, 301, 401-405) - Other institutional facilities (401-405) | 0 | 0 | 0 | 0 | 0 | 0 |
| D007 | Noninstitutionalized population (501, 601-602, 701-702, 704, 706, 801-802, 900-901, 903-904): | 759 | 2 | 362 | 5 | 0 | 4 |
| D008 | Noninstitutionalized population (501, 601-602, 701-702, 704, 706, 801-802, 900-901, 903-904) - College/University student housing (501) | 759 | 0 | 362 | 0 | 0 | 0 |
| D009 | Noninstitutionalized population (501, 601-602, 701-702, 704, 706, 801-802, 900-901, 903-904) - Military quarters (601-602) | 0 | 0 | 0 | 0 | 0 | 0 |
| D010 | Noninstitutionalized population (501, 601-602, 701-702, 704, 706, 801-802, 900-901, 903-904) - Other noninstitutional facilities (701-702, 704, 706, 801-802, 900-901, 903-904) | 0 | 2 | 0 | 5 | 0 | 4 |

Source: U.S. Census Bureau, 2010

**HUNTINGDON BOROUGH
2015 AMERICAN COMMUNITY SURVEY
LOW MODERATE DATA**

| GEOID | GEOGRAPHY NAME | LOW | LOW MOD | LMMI | LOW MOD UNIVERSE | LOW MOD % |
|--------------------------|---|------------|----------------|-------------|-------------------------|------------------|
| 15000US4206 19504001 | Block Group 1, Census Tract 9504, Huntingdon County, Pennsylvania | 325 | 625 | 1080 | 1445 | 43.25% |
| 15000US4206 19504002 | Block Group 2, Census Tract 9504, Huntingdon County, Pennsylvania | 115 | 310 | 665 | 1205 | 25.73% |
| 15000US4206 19504003* | Block Group 3, Census Tract 9504, Huntingdon County, Pennsylvania | 185 | 295 | 435 | 605 | 48.76% |
| 15000US4206 19504004* | Block Group 4, Census Tract 9504, Huntingdon County, Pennsylvania | 510 | 775 | 925 | 1005 | 77.11% |
| 15000US4206 19504005 | Block Group 5, Census Tract 9504, Huntingdon County, Pennsylvania | 25 | 70 | 140 | 325 | 21.54% |
| 15000US4206 19504006* | Block Group 6, Census Tract 9504, Huntingdon County, Pennsylvania | 485 | 685 | 735 | 1030 | 66.50% |

*see map on page 3

Census and Survey Data, Huntingdon Borough

TABLE 2
Comparison of 2000 Census Data and 1999 Borough Survey.

| | 2004 Survey | 1999 Borough Survey | 2000 Census |
|--------------------|----------------|------------------------|----------------|
| Population | 5,614.39 | 6,165 | 6,918 |
| Households | 2,626 | 2,737 | 2,626 |
| Persons/Household | 2.15 | 2.31 | 2.17 |
| Low and Moderate % | 53.69 | 52.12 | 38.37 |

TABLE 3
HUNTINGDON BOROUGH POPULATION TRENDS 1960-2016
(with ACS Projections for 2012-2016)

| | 1960 | 1970 | 1980 | 1990 | 2000 | 2010 | 2016 |
|------------------------------|-------|-------|-------|-------|-------|-------|---------------|
| Total Households | 2,341 | 2,437 | 2,552 | 2,560 | 2,626 | 2,674 | 2,931 |
| Persons per Household | 2.82 | 2.66 | 2.31 | 2.24 | 2.17 | 2.16 | not available |
| Population of Households | 6,613 | 6,483 | 5,904 | 5,731 | 5,686 | 5,773 | not available |
| Population in Group Quarters | 621 | 934 | 1,138 | 1,104 | 1,232 | 1,320 | not available |
| Total Population | 7,234 | 7,417 | 7,042 | 6,835 | 6,918 | 7,093 | 7,042 |

The Borough did propose a Housing Rehabilitation program to stabilize existing housing in the Borough and to allow existing housing stock be occupied by future residents. This activity was not funded in 2000. However, a housing rehabilitation program was coordinated through Huntingdon County Weatherization.

Minority Data

2015 ACS MINORITY DATA

| GEOGRAPHY NAME | Total | White | Black-African American | American Indian and Alaska Native | Asian | Native Hawaiian -Other Pacific Islander | Some other Races | Two or more races | Hispanic | Not Hispanic |
|---|--------------|--------------|-------------------------------|--|--------------|--|-------------------------|--------------------------|-----------------|---------------------|
| Block Group 1, Census Tract 9504, Huntingdon County, PA | 2348 | 2225 | 46 | 0 | 37 | 0 | 0 | 40 | 60 | 2288 |
| Block Group 2, Census Tract 9504, Huntingdon County, PA | 1268 | 1232 | 0 | 0 | 0 | 0 | 0 | 36 | 0 | 1268 |
| Block Group 3, Census Tract 9504, Huntingdon County, PA | 1016 | 946 | 26 | 0 | 8 | 0 | 14 | 22 | 40 | 976 |
| Block Group 4, Census Tract 9504, Huntingdon County, PA | 1070 | 1041 | 29 | 0 | 0 | 0 | 0 | 0 | 0 | 1070 |
| Block Group 5, Census Tract 9504, Huntingdon County, PA | 323 | 323 | 0 | 0 | 0 | 0 | 0 | 0 | 0 | 323 |
| Block Group 6, Census Tract 9504, Huntingdon County, PA | 1035 | 967 | 68 | 0 | 0 | 0 | 0 | 0 | 4 | 825 |

Community Development Needs

Background and History of past activities in Huntingdon Borough

In 1999 and 2000 Huntingdon Borough updated its comprehensive plan. The Borough reviewed the past progress based on previous studies and developed a matrix of accomplishments and future goals to be completed.

The majority of improvements to the Borough's community development activities have been following an initiative begun by a study prepared by Simone and Jaffe. The study reinvigorated the Borough's vision to improve the quality of life in the community, improve conditions for economic development, improve the appearance of the community, and to allow the development of public art and alternate recreational outlets.

The Borough approved guidelines for murals and public art within the Borough. The guidelines assist individuals wishing to place Borough related public art on building and in public spaces. These guidelines will allow the Borough to have artists install public art within the Borough and not be in conflict with future improvements.

Beginning in 2019, Huntingdon Borough and Huntingdon Landmarks, Inc. started working with the Pennsylvania Downtown Center to establish a Main Street program for 2021.

Huntingdon Borough's major community improvement activity was upgrading and streetscape improvements to Allegheny Street from Sixth Street to Second Street. The activity was completed in stages. For 2008 the Borough proposed using CDBG funds to offset engineering cost related to Allegheny Street improvements between William Smith (Third) Street and Second Street. New traffic signals were installed along Penn and Washington Streets with an ARLE grant. In addition, the Borough completed repairs to the crumbling Or Lady Wall on Warm Springs Avenue, the main road to the community hospital.

From 2009 to 2011, the Borough through assistance of a local bond and funding from both Penn Vest and the EPA made major upgrades to the Huntingdon Waste Water project. In 2015, the Borough sought additional funding both from Pennvest and the Federal Government to make further improvements to the Borough's potable water system. Between 2015 and 2019, Huntingdon Borough made improvements to both the sewer and water systems, including new water mains along Washington Street and Second Street. The Borough also repaved the culvert for Muddy Run along Moore and Ninth Streets. PennDOT took this project a step further and in 2020 and 2021, improved and/or replaced culverts for Muddy Run on Moore Street and Penn Street.

In prior years, the Borough chose a new service provider for the recycling program. The service provider is using the Borough-owned and operated recycling center. In 2015, the Borough purchased a new recycling truck and material assist forklift. In 2021, the recycling program has returned to a Borough-managed operation.

The Borough also coordinated a HOME grant application with the Center for Community Action to address the need for additional rehabilitation for tenant housing.

Huntingdon Borough Long Term Goals

The Borough is working to keep pace with current trends and changes as they are reflected in the overall plan, and the Borough is in the process of adopting suggestions found in its own planning documents. To keep up with changes in the Borough, the Council has decided to update the economic portion of its plan. The Borough is addressing the issues of underutilized buildings, parking, and improve the economic condition of the downtown. The Borough has received Transportation Enhancement funds to make parking more desirable in the eastern quadrant of the Borough. The Borough will continue to explore the use of Anchor Building funds to assist with downtown development.

The Borough is continuing to review ways to make improvements in the areas of water and sewage treatment facilities, medical facilities, educational facilities, and recreational facilities.

In 1989, the Borough was faced with a problem of giardia in its water system. In 1993, the Borough completed construction of a new filtration system, storage reservoirs, and distribution system improvements. In 1996, the Borough constructed and improved the water intake dam along Stone Creek. Along with this improvement, the Borough constructed a fish ladder to allow unimpeded movement of local aquatic life up and down stream.

The water quality in 2007 improved greatly. During the year 2000, Huntingdon Borough water was rated high by the Pennsylvania Department of Environmental Protection. The Borough was one of 300 water treatment plants in the United States to apply for membership in the Partnership for Safe Water Program.

Since then, the Borough has been faced with the challenge of making additional improvements to its wastewater treatment and meeting the standard for the Chesapeake Bay. For the Borough of Huntingdon, this will be a long process to meet the funding challenge. The issue with complying with the Chesapeake Clean Water Initiative is how to proceed with a \$20 million project without burdening the customers of the waste water system. In 1988, Huntingdon Borough finished construction on an expanded sewage treatment facility. Due to more stringent regulations for water quality, the Borough completed a \$20 million improvement through bonds and loans to improve the wastewater facility.

The Borough and the J. C. Blair Hospital partnered to make improvements to the hospital emergency room entrance. Funding was through the Appalachian Regional Commission and Pennsylvania Department of Transportation. The Borough provided a local match to upgrade the sewer and water lines under the street leading to the hospital.

As mentioned, the Borough has worked hard since 1999 to make improvements to the quality of life within the Borough. To meet these needs the Borough has undertaken improved outdoor recreation with the reconstruction of the Blair Park area, funded by the former RIRA program and CDBG Funds. Huntingdon Borough, in cooperation with Oneida, Smithfield and Walker Townships, prepared a study to identify the need for an outdoor pool and additional recreation space. This activity was funded, in part, by the Pennsylvania Department

of Conservation and Recreation. A community swimming pool was constructed and the Borough proposes to construct a pedestrian walkway near the Juniata River along with improvements to multiple community parks. In addition, the Borough parks include river access to the Juniata, a skate board park, and over 21 miles of hiking trails. The availability of outdoor recreation is important to Huntingdon residents.

In June 2019, a local community benefactor funded the installation of a splash park, a climbing wall and an inflatable obstacle course at the community pool, and, in July 2019, the Portstown Dog Park was officially opened. This DEP-permitted dog park is the result of a local effort. The dog park has separate areas for small dogs and large dogs along with three benches in each area. Two stations are also provided that allow owners to clean up after their dogs. The Borough is currently constructing an amphitheater at Flag Pole Hill. While the full amount of a grant submitted for street lighting, the Borough did receive \$250,000 that will be used to improve street lighting. A second grant was received by the Borough for Traffic Control Modernization. This grant will cover the upgrades of traffic signals at intersections on 5th, 6th, 7th and 8th on Washington Street, 7th and Mifflin Streets and 12th and Moore Streets within the Borough.

The Borough is continuing to work with the Allegheny Regional Commission to improve canoe and kayak access to the Juniata River at Portstown Park. The ARC has sought funding through the Marcellus Shale funds to develop an access plan for Huntingdon.

In addition to recreation in the Borough, residents can find additional water sport activities and hiking and hunting at Raystown Lake. The Seven Points Recreation Area is about 15 miles south of the Borough. This facility serves a large region outside of Huntingdon County, provides flood protection to the lower Juniata and Susquehanna Rivers, and provides recreational facilities for people in the Pittsburgh, Philadelphia, Baltimore, and Washington, D.C. areas as well as Central Pennsylvania. Recreational facilities available in and around the Lake include fishing, swimming, boating, hiking, mountain biking, hunting, picnicking, and camping.

The Borough's downtown shops and restaurants benefit from the tourist trade. A hotel constructed in the Borough's corporate limits is accessible from U. S.22 and 26.

Recent Developments

In August 2019, an announcement was made that Westminster Woods, located in Huntingdon Borough, received a Pennsylvania Housing Finance Agency (PHFA) tax credit award to build affordable housing for ages 62 and over. The project, Westminster Place, proposed a 48-unit apartment building on the 4.85 acre Westminster Woods campus. Westminster Place was officially open to residents in April 2022.

The addition of Bryan Park in Huntingdon Borough was a major benefit to the community. In August 2019 a fire destroyed the M&T Vacuum business and apartments on the 500 block of Washington Street and created a vacant space in Huntingdon's downtown business district. This vacancy presented a threat to the value and functionality of the downtown area and surrounding businesses. Because building codes, the space layout, no off-street parking and

no open traffic access limited the rebuilding value of this property, the Huntingdon Borough Manager envisioned creating a uniquely attractive ADA-compliant community park space, focused on outdoor dining, gathering, and entertainment. Bryan Park, dedicated on October 16, 2021, is an outstanding event venue and picnic area managed by the Borough.

In the early morning hours of May 12, 2020, a large commercial fire destroyed Huntingdon Electric Motor, Co. and severely damaged the neighboring Blair House Apartments all housed in the historic Blair Building in the Borough. Blair House Apartments provided subsidized housing to 59 elderly residents and Huntingdon Electric Motor, Co. specializes in repair, maintenance, manufacture and sale of electrical apparatus.

Blair House Apartment residents were relocated. And Huntingdon Electric Motor, Co. relocated to Smithfield Township. In May 2022, the building owner, Stanford Management, Portland, Maine had signed a contract with a construction company to rebuild the structure. By September 2022, Stanford Management informed Borough officials that restoring the structure was no longer a viable option. In October 2022, Huntingdon Borough officials announced demolition of the Blair Building would begin. By February 2023, G&R Excavating had the building completely demolished and the area cleaned of debris.

In September 2020, the Fourth Street stormwater project, a multi-million dollar water and sewer line project, started at Allegheny Street near the 4th Street bridge and moved block-by-block the entire length of Fourth Street towards the cemetery. The goal of the project was to separate the sewer lines and install new water lines. The Borough also replaced water lines in the 6th Street parking lot in 2020, 5th Street to 4th Street in 2021 and 2nd Street to William Smith Street in 2022.

After Huntingdon Borough's replacement of water lines on Penn Street between 2nd Street and William Penn Street, PennDOT milled and repaved the entire length of Penn Street (State Route 26) through Huntingdon Borough. This project, including ADA curb ramps, was completed in October 2022.

The Borough is currently working on providing the community a Bulk Water Station. This station will provide residents and local fire companies with an additional water source. The station is located by the former Laney's Feed Mill. Currently, the Borough is waiting on electric and internet service to be fully operational.

Economic Development

Based on figures from the Pennsylvania Department of Labor, since 1989, Huntingdon County has a consistent labor force averaging around 17,500 individuals of which 7,650 are women.

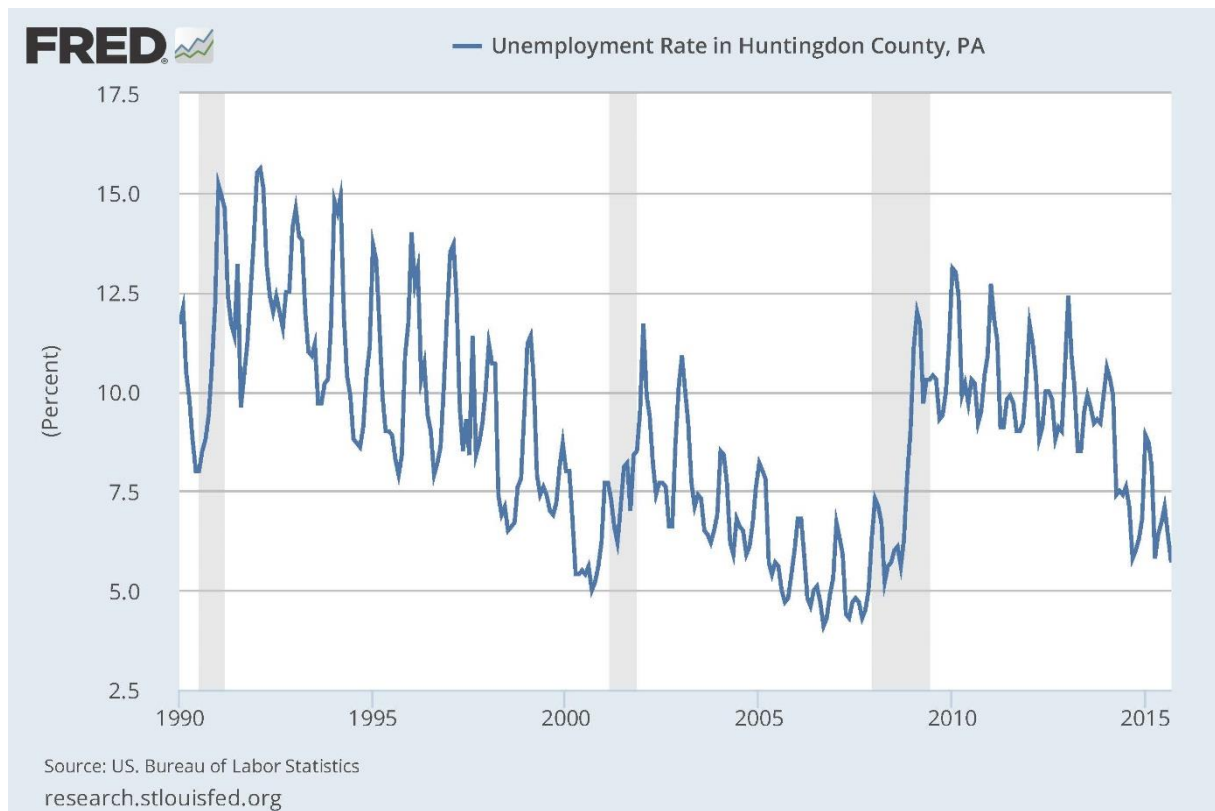
In 1990, Huntingdon County had 3,100 persons, from the labor pool of 17,500, in manufacturing, 700 in contract construction, 500 in transportation and public utilities, 2,300 in wholesale and retail sales, and an equal number of 2,300 in government services. By 2007 the work force increased to 21,000, a 16.67% increase since 1989. Four years later the work force dropped to 20,100, a decrease of 4.2%.

As of September 21, 2023 Huntingdon Borough's major employers include:

| | |
|-------------------------------------|--------------------|
| Juniata College | employing over 350 |
| Penn Highlands-Huntingdon* | employing over 400 |
| Huntingdon Area School District | employing 108 |
| Mutual Benefit Group (HQ) | employing 139 |
| Huntingdon County Govt. | employing over 100 |
| Huntingdon Borough Govt. | employing 97 |
| Huntingdon Fiberglass Products, LLC | employing over 40 |
| DC Goodman and Sons (HQ) | employing over 40 |

*formerly J. C. Blair Memorial Hospital (HQ); effective June 1, 2019, J. C. Blair joined Penn Highlands Healthcare and was renamed.

The county unemployment varies from month to month reflecting seasonal changes. The lowest yearly average for unemployment was 4.70% in 2007 to a high of 16.8% for 1983 for a period from 1981 to 2007. The average over the 27- year period is about 10.28%. In general it can be stated that the unemployment rate in the county are fluid. The trend for 1997 indicated that the number of persons working in Huntingdon County has decreased, leading to a .4% increase in the unemployment rate from 1996. Huntingdon County is also showing a decline in manufacturing jobs with an increase in transportation related work.



Huntingdon Borough reflects the trends of Huntingdon County. With this information some generalizations can be made about Huntingdon County that are reflected by the Borough.

Percent Unemployment for 1981 to 2013
 Huntingdon County of Labor Pool Labor Pool (May 2012 n=22,300
 (September 2011, n=22,500)

| | | | | | |
|------|-------|------|--------|---------|--------|
| 1981 | 13.7% | 1990 | 9.8% | 1998 | 8.90% |
| 1982 | 16.3% | 1991 | 12.3% | 3/1999 | 10.90% |
| 1983 | 16.8% | 1992 | 13.3% | 12/1999 | 8.50% |
| 1984 | 13.6% | 1993 | 12.00% | 01/2001 | 9.60% |
| 1985 | 13.4% | 1994 | 10.68% | 01/2002 | 14.20% |
| 1986 | 11.1% | 1995 | 9.80% | 02/2003 | 12.00% |
| 1987 | 9.8% | 1996 | 9.80% | 02/2004 | 10.70% |
| 1988 | 8.3% | 1997 | 10.20% | 01/2005 | 5.80% |
| 1989 | 8.5% | | | 01/2006 | 5.40% |
| | | | | 02/2007 | 4.70% |
| | | | | 03/2008 | 6.0% |
| | | | | 03/2009 | 11.2% |
| | | | | 04/2010 | 10.4% |
| | | | | 09/2011 | 10.2% |
| | | | | 05/2012 | 8.6% |
| | | | | 09/2013 | 9.0% |
| | | | | 10/2015 | 5.3% |

Historically since 1984, the Borough has experienced a loss of local jobs and job opportunity to developing surrounding townships. The Borough lost three State agencies, moving into the adjacent Smithfield Township. The Borough is experiencing a growth in service industries.

Huntingdon has established a micro-loan program to encourage business to locate in the Borough. Since the program has begun, the Borough has, either through the loan program, or the business atmosphere within the Borough, attracted about 10 new businesses. The loan program has assisted 10 low and moderate-income business developments. Of those 10, two have defaulted and one is struggling to make payments. New guidelines for this micro-loan program have been established. Improvements to the micro-loan program have been submitted to the Pennsylvania Department of Community and Economic Development (DCED) and the Borough is awaiting DCED approval of these changes.

Interagency Cooperation

In 1984, the Borough became a State identified Main Street Community, with an interest in bolstering Economic Development. Huntingdon Borough formed a partnership in 1984 with the former Huntingdon Revitalization and Development now the Greater Huntingdon County Chamber of Commerce. The Main Street Program was one of the longest running State initiated Main Street Communities. In 1996/1997 the Main Street Program and Huntingdon Revitalization transformed into a chamber of commerce.

As with the Main Street program, the new Chamber of Commerce planned to continue with technical assistance from DCED and the Main Street Center. There have been discussions with DCED, the Pennsylvania Downtown Center, the Center for Rural Pennsylvania, the Chamber, Borough Council, and local business members to discuss using CDBG funds to promote economic development and job creation in the Borough. The Center and Borough have also discussed a main street program to incorporate out-lying township(s).

A cooperative effort initiated in 1999 created a Borough micro-loan program, based on the concept of assisting limited clientele with low and moderate income. The program has assisted two new businesses in the Borough; created seven new jobs; and created use for two historically significant buildings in the Borough. In December 2021, the Borough closed its CDBG-funded Economic Development Loan (Microenterprise) Revolving Fund. At the guidance of DCED staff, these funds were provided to Huntingdon County as program income. Receipt of these program income funds necessitated CDBG contract revisions to utilize the funds for revitalization of the Borough's historic town clock.

Borough-Wide Needs Priorities

The Borough desires to keep its original goals of 1991. These goals may soon change with the shift of administration from the Borough to the County. However, with job cuts and a yearly decrease in funding sources, it is the Borough's intention to review and revise its long term and short term goals. For this application, past long and short terms goals are part of the application.

Each year Huntingdon Borough reviews its Borough wide priorities, since 1991 the priorities have remained consistent. Therefore, the following categories are being addressed:

Community-Wide Housing Needs

GOAL: To encourage the provision of decent, safe, and sanitary housing for all the residents of Huntingdon Borough regardless of age, sex, income, religious or ethnic background.

The major Borough wide housing needs throughout the Borough include:

1. Upgraded level of maintenance of the housing stock in some sections of the Borough.
2. Provision of a wide choice in housing type throughout the Borough.
3. Demolition of a number of dilapidated structures throughout the Borough.
4. Attraction of Housing Developers to the Borough to construct medium priced housing.
5. Provision of certain types of housing e.g. large family, elderly, low income, etc.
6. Identification of suitable sites for building reuse and conversion for housing throughout the Borough.

Community-wide Public/Community Facilities and Improvements Needs:

GOAL: To encourage and promote the provision of adequate community facilities, utilities, and services in Huntingdon Borough by Appropriate governmental and private organizations.

The major Borough wide needs for public and community facilities improvements throughout the Borough include:

1. Upgraded public facilities such as: storm-water drainage systems, water systems, and sewage disposal.
2. Provision of additional number and greater variety of recreational facilities and opportunities.
3. Provision of adequate solid waste disposal facilities for the citizens of the Borough.
4. Reconstruction of local roads, streets, and bridges.
5. Provision of a recycling center for the citizens of the Borough.

Borough Needs for Public Services:

GOAL: To assist all Borough residents in achieving economic self- sufficiency, public safety, good mental and physical health, and healthy social relationships through the provision of a variety of social and public services.

The major Borough wide public service needs throughout the Borough include:

1. Provision of expanded programs to serve the high number of unemployed citizens throughout the Borough, e.g. job training, job placement.
2. Provision of coordinated delivery of Health, Social and Welfare Service through the use of a Human Service Coordinator.
3. Construction of physical improvements to public structures to accommodate the handicapped and elderly.
4. Reconstruction of sidewalks for the safety of pedestrians.
5. Provisions of a recycling service to aid the citizens of the Borough in the removal and disposal of recyclable materials.

Economic Development Needs:

GOAL: To encourage the development of a healthy and diversified economic base capable of providing employment and goods and services to the residents of Huntingdon Borough.

The major economic needs throughout the Borough include:

1. Provision of greater number of job opportunities in the basic industries.

2. Provision of greater variety of job opportunities for low to moderate-income persons.
3. Formulation of a Comprehensive Development Plan Update to guide future economic growth and development throughout the Borough.
4. Identification of those Industries and Commercial Enterprises throughout the Borough which may wish to expand.
5. Provision of additional services and programs to local business and industry to enable them to better compete in the marketplace.
6. Identification of sites with required services and other desirable features which can accommodate additional Industrial and Commercial activity.
7. Continued diversification of the Industrial and Commercial base of the Borough.
8. Provision of proper land use and development to prevent future slums and blight.

The Community Development and Housing Needs are beginning to change as a result of new challenges to the Borough. These needs are just as important now as they were in 1985, the first year the Borough began to utilize its CDBG "Entitlement" funds.

COMMUNITY-WIDE NEEDS PRIORITIES

Huntingdon Borough Council has approved the following as the Community-wide Needs Priorities for Huntingdon Borough. This was based on the need assessment, an analysis of all-relevant data, and public input. These needs categories have been arranged in priority order.

PRIORITY # COMMUNITY DEVELOPMENT AND HOUSING NEEDS

1. PUBLIC/COMMUNITY FACILITIES
 - a. Storm Water Facilities
 - b. Water Service
 - c. Sewage Collection and Treatment
 - d. Solid Waste Disposal
 - e. Local Roads, Streets, and Sidewalks
 - f. Parking Garage, Eastern quadrant of the Borough
 - g. Boroughwide recreation
2. ECONOMIC DEVELOPMENT
 - a. Commercial CBD and Economic Revitalization
 - b. More and a Greater Variety of Jobs
 - c. Economic Base Diversification
 - d. Public Art in Public Space
3. HOUSING
 - a. Rehabilitation
 - b. Choice of Type

4. PUBLIC SERVICE
 - a. Handicapped and Elderly Accessibility
 - b. Domestic Violence Aid and Assistance
5. OTHER
 - a. Historic Preservation
 - b. Proper Land Use Development to Prevent Future Slums and Blight
 - c. Community Planning and Programming

Goals and Priorities currently being met through local and state funding programs.

- a. Recycling Center and Service
- b. Recreational Facilities

The Huntingdon Borough Council has selected the following Activities to be included in the Borough's Three-Year Plan for Community Development and for funding under the Community Development Block Grant Program.

SHORT TERM AND LONG TERM CDBG PRIORITIES

FFY 2023

- 7th Street Parking Lot Rehabilitation

FFY 2024 and Future

- Demolition, clearance and rehabilitation in coordination with Habitat for Humanity
- Portstown Park - installation of ADA canoe/kayak access points
- Bryan Park - property acquisition and demolition to extend the park and create a rear Borough-owned park entrance

Prior Three-Year Plan projects have included:

FFY 2015

- Encouragement of economic development to promote new business in downtown Huntingdon by offering low interest loans for property improvement (ongoing activity through a revolving loan program)
- Streetscape improvements within the Borough
- Housing Rehabilitation for tenement occupied housing through an OBO HOME program

FFY 2016

- Encouragement of economic development to promote new businesses in downtown Huntingdon
- Streetscape Improvements within the Borough
- Improvement to Tenant Housing - Rehabilitation

FFY 2017

- Sidewalk rehabilitation for owner-occupied properties throughout the Borough
- ADA curb cuts throughout the Borough

FFY 2018

- 912 Washington Street Rehab (Habitat for Humanity)
- Town Clock Revitalization

FFY 2019

- Town Clock Revitalization

FFY 2020

- 6TH Street Municipal Parking Lot Rehabilitation

FFY 2021

- 6th Street Municipal Parking Lot Rehabilitation

FFY 2022

- 6th Street Municipal Parking Lot Rehabilitation
- Westminster Place Outdoor Upgrades

Relationship of Community Development Plan with Other Plans

The Community Development Plan was developed in part with data from other studies and plans. These include: Southern Alleghenies Planning Commission Reports, the Huntingdon County Comprehensive Plan, U.S. Census Data, County Industrial Development Authority, Office of Employment Security, County Housing Surveys, County Housing Authority, Pennsylvania Department of Transportation Reports, County Historic Sites Surveys, and input from local municipal officials. A partial bibliography is attached.

DATA SOURCES

The Data Sources utilized to identify the foregoing described needs, priorities, and objectives include the following:

1. 1980 Technical Reports: Housing Problem Definition, Huntingdon County Planning Commission, June 1980.
2. 1980 Technical Reports: Area-wide Housing Opportunity Planning, Huntingdon County Planning Commission, 1980.
3. 1980 Technical Reports: Triennial Review, Housing, July 1980.
4. Huntingdon County Comprehensive Plan, 1982 Countywide Development Goals, Huntingdon County Planning Commission, September, 1982.
5. Huntingdon County Comprehensive Plan, 1979 Economic and Employment Plan, Huntingdon County Planning Commission, June 1977.
6. 1982 Technical Reports: Water and Sewer Facilities, Huntingdon County Planning Commission, 1982.
7. Huntingdon County Comprehensive Plan, 1978 Conservation Plan, Huntingdon County Planning Commission, June 1978.
8. Huntingdon County Comprehensive Plan, 1978 Community Facilities Plan, Huntingdon

County Planning Commission, June 1978.

9. Huntingdon County Comprehensive Plan, 1979 Land Use Plan, Huntingdon County Planning Commission, June 1978.

10. Downtown Huntingdon Revitalization and Design Study, Thomas R. Deans Associates, November, 1987.

11. Downtown Huntingdon: Design Guidelines, Thomas R. Deans Associates, November 1987.

12. Comprehensive Plan Parts.1 and 2, Region IV, Huntingdon County, Clifton E. Rogers and Associates, 1971.

13. Comprehensive Plan CBD, Huntingdon Borough, Region IV, Huntingdon County, Clifton E. Rogers and Associates, 1971.

14. Huntingdon Borough National Register Nomination, HRDI, 1985.

15. Huntingdon County Business Directory, 1988, Huntingdon County Business and Industry and Huntingdon County Planning and Development Department, April 1988.

16. Michael Cabot and Associates, Huntingdon, PA Comprehensive Plan, Report No. 1, Background Analysis Community Improvement Questionnaire, Huntingdon Borough, Pennsylvania, 1992.

17. Michael Cabot and Associates, Huntingdon, PA Comprehensive Plan, Report No. 2, Background Analysis Population, Housing, Economic Conditions, Physiography, and Existing Land Use, Huntingdon Borough, Pennsylvania, 1992.

18. Michael Cabot and Associates, Huntingdon, PA Comprehensive Plan, Report No. 3, Detailed Plan, Huntingdon Borough, Pennsylvania, 1992.

19. Michael Cabot and Associates, Huntingdon, PA Comprehensive Plan, Report No. 4, Summary Plan, Huntingdon Borough, Pennsylvania, 1992.

20. Simone and Jaffe Inc., (Huntingdon Borough) Allegheny and Penn Street Museum and Business District Study, Parts I and II, May 1993.

21. AE Solutions, Huntingdon Borough Council, TEA 21 Portstown Park Improvement, October 1999.

22. AE Solutions, Huntingdon Borough Council, Comprehensive Plan Up-date - economic development, parking, and streetscape. February, 1999.

23. AE Solutions/GET Architectural Services, Huntingdon Borough Parking Garage Study, June 2000.

24. AE Solutions, Huntingdon Borough Uptown Playground Improvements. Summer 2000.

25. Huntingdon Mural, Huntingdon County Arts Council, Summer 2003.

26. George John Drobnock and Joy Bridy, Environmental Art, Position Paper for Huntingdon County Arts Council. January 2004.

27. Guidelines for Public Art in Public Places. Huntingdon Borough 2007